



[Go to Product page](#)

Datasheet for ABIN6745757
anti-SGK3 antibody (AA 107-156)

2 Images

Overview

Quantity:	100 µL
Target:	SGK3
Binding Specificity:	AA 107-156
Reactivity:	Human, Rabbit, Cow, Dog, Guinea Pig, Horse, Monkey, Bat, Chicken
Host:	Rabbit
Clonality:	Polyclonal
Conjugate:	This SGK3 antibody is un-conjugated
Application:	Western Blotting (WB), Immunohistochemistry (IHC), Immunohistochemistry (Paraffin-embedded Sections) (IHC (p))

Product Details

Brand:	IHC-plus™
Immunogen:	Synthetic peptide located between aa107-156 of human SGK3 (NP_733827). Percent identity by BLAST analysis: Human, Chimpanzee, Orangutan, Gibbon, Monkey, Galago, Marmoset, Elephant, Dog, Bovine, Bat, Rabbit, Horse, Guinea pig, Turkey, Zebra finch, Chicken (100%), Mouse, Rat, Opossum, Platypus, Lizard (92%). Type of Immunogen: Synthetic peptide
Specificity:	Human SGK3
Predicted Reactivity:	Percent identity by BLAST analysis: Human, Dog, Bovine, Rabbit, Horse, Guinea pig, Chicken (100%) Mouse, Rat (92%).

Product Details

Purification: Immunoaffinity purified

Target Details

Target: SGK3

Alternative Name: SGK3 ([SGK3 Products](#))

Background: Name/Gene ID: SGK3
Subfamily: SGK
Family: Protein Kinase

Synonyms: SGK3, CISK, SGKL

Gene ID: 23678

NCBI Accession: [NP_733827](#)

UniProt: [Q96BR1](#)

Application Details

Application Notes: Approved: IHC, IHC-P (5 µg/mL), WB (0.2 - 1 µg/mL)

Usage: Western Blot: Suggested dilution at 1 µg/mL in 5 % skim milk / PBS buffer, and HRP conjugated anti-Rabbit IgG should be diluted in 1: 50,000 - 100,000 as secondary antibody.

Comment: Target Species of Antibody: Human

Restrictions: For Research Use only

Handling

Format: Lyophilized

Reconstitution: Distilled water

Concentration: Lot specific

Buffer: Lyophilized from PBS with 2 % sucrose

Handling Advice: Avoid repeat freeze-thaw cycles.

Storage: 4 °C, -20 °C

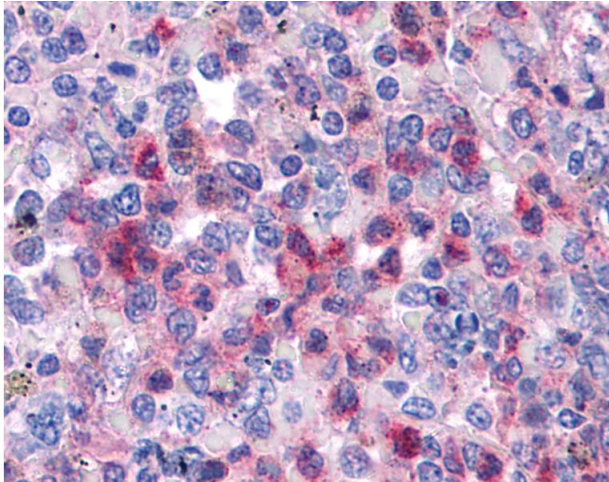
Storage Comment: Long term: -20°C, the use of 50% glycerol is recommended if storing aliquots in -20°C for long

Handling

term use (up to 1 year)

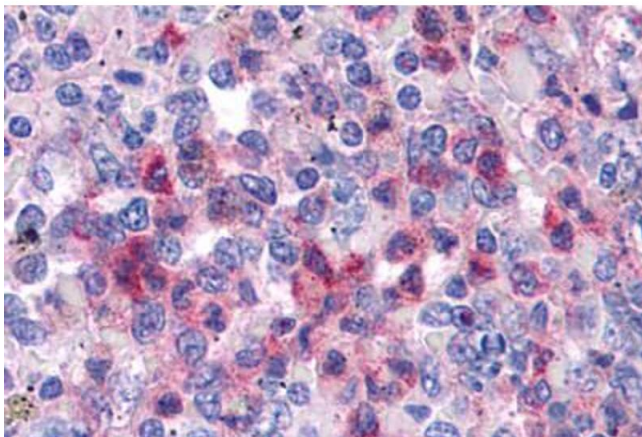
Short term (less than 1 week): 4°C. Avoid freeze-thaw cycles.

Images



Immunohistochemistry

Image 1. Anti-SGK3 antibody IHC of human spleen. Immunohistochemistry of formalin-fixed, paraffin-embedded tissue after heat-induced antigen retrieval. Antibody concentration 5 ug/ml. This image was taken for the unconjugated form of this product. Other form ...



Immunohistochemistry (Formalin-fixed Paraffin-embedded Sections)

Image 2. Human Spleen: Formalin-Fixed, Paraffin-Embedded (FFPE)