

Datasheet for ABIN6745760
anti-GPX4 antibody (AA 72-121)[Go to Product page](#)

2 Images

Overview

Quantity:	100 µL
Target:	GPX4
Binding Specificity:	AA 72-121
Reactivity:	Human, Mouse, Rat, Zebrafish (Danio rerio), Guinea Pig, Cow, Monkey, Goat
Host:	Rabbit
Clonality:	Polyclonal
Conjugate:	This GPX4 antibody is un-conjugated
Application:	Western Blotting (WB), Immunohistochemistry (IHC), Immunohistochemistry (Paraffin-embedded Sections) (IHC (p))

Product Details

Brand:	IHC-plus™
Immunogen:	Synthetic peptide located between aa72-121 of human GPX4 (P36969, NP_002076). Percent identity by BLAST analysis: Human, Gorilla, Orangutan, Gibbon, Monkey, Marmoset (100%), Rice (92%), Galago, Mouse, Rat, Goat, Elephant, Panda, Bovine, Bat, Rabbit, Horse, Pig, Guinea pig, Platypus, Zebrafish, Mosquito, Poplar, Arabidopsis (85%). Type of Immunogen: Synthetic peptide
Specificity:	Human GPX4
Predicted Reactivity:	Percent identity by BLAST analysis: Human (100%) Mouse, Rat, Bovine, Goat, Guinea pig, Zebrafish (85%).

Product Details

Purification: Immunoaffinity purified

Target Details

Target: GPX4

Alternative Name: GPX4 / MCSP ([GPX4 Products](#))

Background: Name/Gene ID: GPX4

Synonyms: GPX4, GPx-4, MCSP, SnPHGPx, Phospholipid hydroperoxidase, SnGPx, Glutathione peroxidase 4, GSHPx-4, PHGPx

Gene ID: 2879

NCBI Accession: [NP_002076](#)

UniProt: [P36969](#)

Application Details

Application Notes: Approved: IHC, IHC-P (5 µg/mL), WB (1 µg/mL)

Usage: Western Blot: Suggested dilution at 1 µg/mL in 5 % skim milk / PBS buffer, and HRP conjugated anti-Rabbit IgG should be diluted in 1: 50,000 - 100,000 as secondary antibody.

Comment: Target Species of Antibody: Human

Restrictions: For Research Use only

Handling

Format: Lyophilized

Reconstitution: Distilled water

Concentration: Lot specific

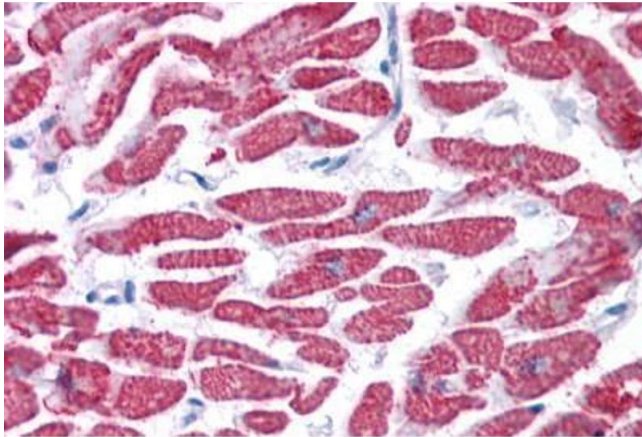
Buffer: Lyophilized from PBS with 2 % sucrose

Handling Advice: Avoid repeat freeze-thaw cycles.

Storage: 4 °C, -20 °C

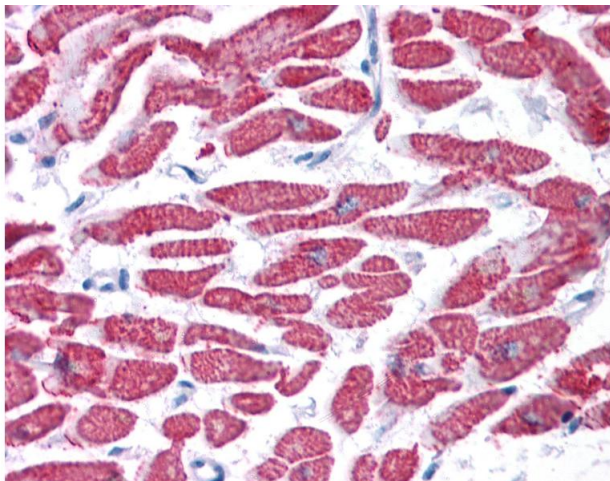
Storage Comment: Long term: -20°C, the use of 50% glycerol is recommended if storing aliquots in -20°C for long term use (up to 1 year)

Short term (less than 1 week): 4°C. Avoid freeze-thaw cycles.



Immunohistochemistry (Formalin-fixed Paraffin-embedded Sections)

Image 1. Human Heart: Formalin-Fixed, Paraffin-Embedded (FFPE)



Immunohistochemistry

Image 2. Anti-GPX4 antibody IHC of human heart. Immunohistochemistry of formalin-fixed, paraffin-embedded tissue after heat-induced antigen retrieval. Antibody concentration 5 ug/ml. This image was taken for the unconjugated form of this product. Other forms ...