

## Datasheet for ABIN6745761 anti-UCHL3 antibody (N-Term)



[Go to Product page](#)

### 2 Images

#### Overview

Quantity:	100 µL
Target:	UCHL3 (Uchl3)
Binding Specificity:	N-Term
Reactivity:	Human, Rat, Mouse, Cow, Horse, Dog, Rabbit, Guinea Pig, Zebrafish (Danio rerio), Pig, Monkey
Host:	Rabbit
Clonality:	Polyclonal
Conjugate:	This UCHL3 antibody is un-conjugated
Application:	Western Blotting (WB), Immunohistochemistry (IHC), Immunohistochemistry (Paraffin-embedded Sections) (IHC (p))

#### Product Details

Brand:	IHC-plus™
Immunogen:	Synthetic peptide from N-Terminus of human UCHL3 (P15374, NP_005993). Percent identity by BLAST analysis: Human, Chimpanzee, Orangutan, Monkey, Mouse, Rat, Panda, Dog, Bovine, Rabbit, Horse, Pig, Opossum, Guinea pig (100%), Gorilla, Galago (93%), Chicken, Platypus (92%), Elephant, Lizard (86%), Gibbon, Xenopus, Zebrafish (85%), Grape (83%).  Type of Immunogen: Synthetic peptide
Isotype:	IgG
Specificity:	Human UCHL3
Predicted Reactivity:	Percent identity by BLAST analysis: Human, Mouse, Rat, Dog, Bovine, Rabbit, Pig, Guinea pig

## Product Details

(100%) Chicken (92%) Xenopus, Zebrafish (85%).

Purification: Immunoaffinity purified

## Target Details

Target: UCHL3 (Uchl3)

Alternative Name: UCHL3 ([Uchl3 Products](#))

Background: Name/Gene ID: UCHL3  
Subfamily: Cysteine C12  
Family: Protease

Synonyms: UCHL3, Ubiquitin thiolesterase, Ubiquitin thioesterase L3, UCH-L3

Gene ID: 7347

NCBI Accession: [NP\\_005993](#)

UniProt: [P15374](#)

Pathways: [Feeding Behaviour](#), [Positive Regulation of fat Cell Differentiation](#)

## Application Details

Application Notes: Approved: IHC, IHC-P (5 µg/mL), WB (0.2 - 1 µg/mL)

Usage: Western Blot: Suggested dilution at 1 µg/mL in 5 % skim milk / PBS buffer, and HRP conjugated anti-Rabbit IgG should be diluted in 1: 50,000 - 100,000 as second antibody. ELISA titer in peptide based assay: 1:1562500.

Comment: Target Species of Antibody: Human

Restrictions: For Research Use only

## Handling

Format: Lyophilized

Reconstitution: Distilled water

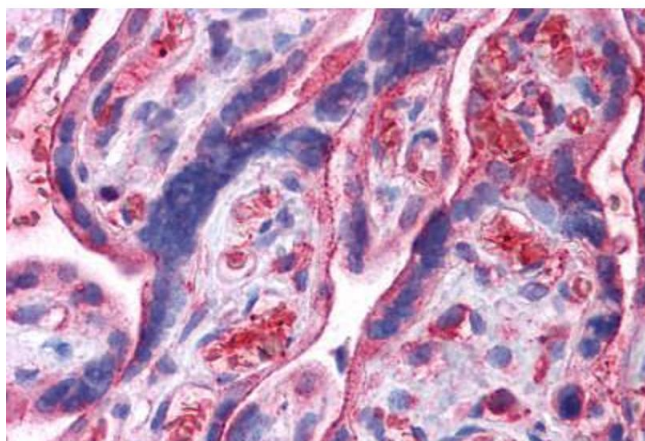
Concentration: Lot specific

Buffer: Lyophilized from PBS with 2 % sucrose

## Handling

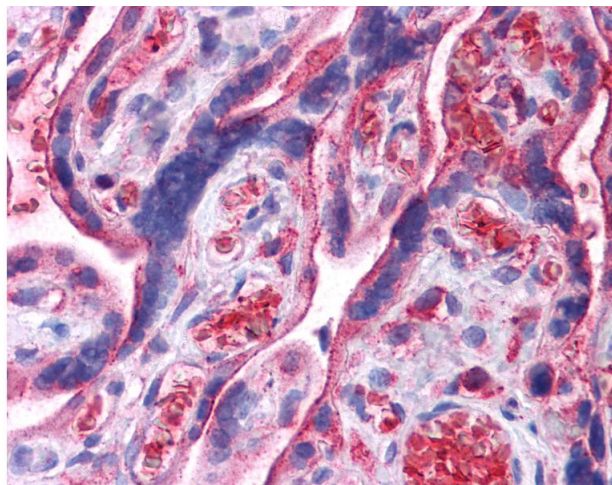
Handling Advice:	Avoid repeat freeze-thaw cycles.
Storage:	4 °C,-20 °C
Storage Comment:	Long term: -20°C, the use of 50% glycerol is recommended if storing aliquots in -20°C for long term use (up to 1 year) Short term (less than 1 week): 4°C. Avoid freeze-thaw cycles.

## Images



### Immunohistochemistry (Formalin-fixed Paraffin-embedded Sections)

**Image 1.** Human Placenta: Formalin-Fixed, Paraffin-Embedded (FFPE)



### Immunohistochemistry

**Image 2.** Anti-UCHL3 antibody IHC of human placenta. Immunohistochemistry of formalin-fixed, paraffin-embedded tissue after heat-induced antigen retrieval. Antibody concentration 5 ug/ml. This image was taken for the unconjugated form of this product. Other f ...