

Datasheet for ABIN6746002  
**anti-FOXL2 antibody (AA 154-203)**[Go to Product page](#)

## 1 Image

## Overview

Quantity:	100 µL
Target:	FOXL2
Binding Specificity:	AA 154-203
Reactivity:	Human, Mouse, Rat, Cow, Pig, Rabbit, Goat, Dog, Monkey, Zebrafish (Danio rerio)
Host:	Rabbit
Clonality:	Polyclonal
Conjugate:	This FOXL2 antibody is un-conjugated
Application:	Western Blotting (WB)

## Product Details

Immunogen:	Synthetic peptide located between aa154-203 of rat Foxl2 (D4A0S1). Percent identity by BLAST analysis: Human, Gorilla, Monkey, Mouse, Rat, Goat, Dog, Bovine, Rabbit, Pig, Opossum (100%), Platypus, Zebrafish (85%).  Type of Immunogen: Synthetic peptide
Specificity:	Rat FOXL2
Predicted Reactivity:	Percent identity by BLAST analysis: Human, Mouse, Rat, Dog, Bovine, Goat, Rabbit, Pig (100%) Zebrafish (85%).
Purification:	Immunoaffinity purified

## Target Details

Target:	FOXL2
Alternative Name:	FOXL2 ( <a href="#">FOXL2 Products</a> )
Background:	Name/Gene ID: FOXL2 Family: Transcription factor  Synonyms: FOXL2, BPES, BPES1, Forkhead box L2, Forkhead box protein L2, PFRK, PINTO, POF3
Gene ID:	668
UniProt:	<a href="#">P58012</a>
Pathways:	<a href="#">Nuclear Hormone Receptor Binding</a> , <a href="#">Positive Regulation of Endopeptidase Activity</a>

## Application Details

Application Notes:	Approved: WB (0.2 - 1 µg/mL)  Usage: Western Blot: Suggested dilution at 1 µg/mL in 5 % skim milk / PBS buffer, and HRP conjugated anti-Rabbit IgG should be diluted in 1: 50,000 - 100,000 as secondary antibody.  Not recommended for: IHC-P
Comment:	Target Species of Antibody: Rat
Restrictions:	For Research Use only

## Handling

Format:	Lyophilized
Reconstitution:	Distilled water
Concentration:	Lot specific
Buffer:	Lyophilized from PBS with 2 % sucrose
Handling Advice:	Avoid repeat freeze-thaw cycles.
Storage:	4 °C, -20 °C
Storage Comment:	Long term: -20°C, the use of 50% glycerol is recommended if storing aliquots in -20°C for long term use (up to 1 year)

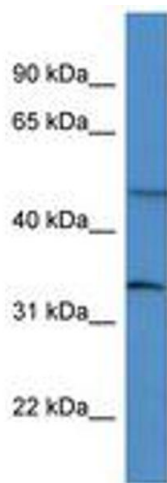
## Handling

---

Short term (less than 1 week): 4°C. Avoid freeze-thaw cycles.

## Images

---



**Image 1.**