

Datasheet for ABIN6746013
anti-YWHAB antibody (AA 70-119)



[Go to Product page](#)

1 Image

Overview

| | |
|----------------------|---|
| Quantity: | 100 µL |
| Target: | YWHAB |
| Binding Specificity: | AA 70-119 |
| Reactivity: | Human, Mouse, Dog, Sheep, Rabbit, Guinea Pig, Pig |
| Host: | Rabbit |
| Clonality: | Polyclonal |
| Conjugate: | This YWHAB antibody is un-conjugated |
| Application: | Western Blotting (WB) |

Product Details

| | |
|-----------------------|--|
| Immunogen: | Synthetic peptide located between aa70-119 of human YWHAB (P31946, NP_003395). Percent identity by BLAST analysis: Human, Chimpanzee, Rabbit, Pig, Guinea pig (100%), Gorilla, Orangutan, Gibbon, Monkey, Galago, Marmoset, Mouse, Rat, Sheep, Dog, Bovine, Bat, Elephant, Platypus (86%), Horse, Turkey, Chicken, Lizard (80%). Type of Immunogen: Synthetic peptide |
| Specificity: | Human YWHAB / 14-3-3 Beta |
| Predicted Reactivity: | Percent identity by BLAST analysis: Human, Mouse, Sheep, Dog, Pig (86%). |
| Purification: | Immunoaffinity purified |

Target Details

| | |
|-------------------|---|
| Target: | YWHAB |
| Alternative Name: | YWHAB / 14-3-3 Beta (YWHAB Products) |
| Background: | Name/Gene ID: YWHAB Synonyms: YWHAB, 14-3-3 alpha, 14-3-3 Beta, 14-3-3 protein beta/alpha, GW128, Protein 1054, HS1, KCIP-1, YWHAA |
| Gene ID: | 7529 |
| NCBI Accession: | NP_003395 |
| UniProt: | P31946 |
| Pathways: | Fc-epsilon Receptor Signaling Pathway , EGFR Signaling Pathway , Neurotrophin Signaling Pathway , Myometrial Relaxation and Contraction , Maintenance of Protein Location |

Application Details

| | |
|--------------------|--|
| Application Notes: | Approved: WB (1 µg/mL) Usage: Western Blot: Suggested dilution at 1 µg/mL in 5 % skim milk / PBS buffer, and HRP conjugated anti-Rabbit IgG should be diluted in 1: 50,000 - 100,000 as secondary antibody. |
| Comment: | Target Species of Antibody: Human |
| Restrictions: | For Research Use only |

Handling

| | |
|------------------|---|
| Format: | Lyophilized |
| Reconstitution: | Distilled water |
| Concentration: | Lot specific |
| Buffer: | Lyophilized from PBS with 2 % sucrose |
| Handling Advice: | Avoid repeat freeze-thaw cycles. |
| Storage: | 4 °C, -20 °C |
| Storage Comment: | Long term: -20°C, the use of 50% glycerol is recommended if storing aliquots in -20°C for long term use (up to 1 year) Short term (less than 1 week): 4°C. Avoid freeze-thaw cycles. |

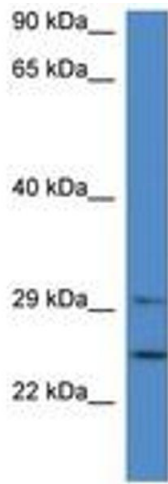


Image 1.