



[Go to Product page](#)

Datasheet for ABIN6746030
anti-TAF12 antibody (C-Term)

1 Image

Overview

Quantity:	100 µL
Target:	TAF12
Binding Specificity:	C-Term
Reactivity:	Human, Rat, Mouse, Cow, Dog, Horse, Rabbit, Guinea Pig, Zebrafish (Danio rerio), Bat, Chicken, Hamster, Monkey, Pig, Xenopus laevis
Host:	Rabbit
Clonality:	Polyclonal
Conjugate:	This TAF12 antibody is un-conjugated
Application:	Western Blotting (WB)

Product Details

Immunogen:	Synthetic peptide from C-Terminus of mouse Taf12 (Q16514, NP_079855). Percent identity by BLAST analysis: Human, Chimpanzee, Gorilla, Gibbon, Monkey, Galago, Marmoset, Mouse, Rat, Hamster, Elephant, Dog, Bovine, Bat, Rabbit, Horse, Pig, Opossum, Guinea pig, Turkey, Zebra finch, Chicken, Platypus, Xenopus, Catfish, Salmon, Smelt, Stickleback, Zebrafish (100%), Trout (92%), Drosophila, Beetle (85%). Type of Immunogen: Synthetic peptide
Specificity:	Mouse TAF12
Predicted Reactivity:	Percent identity by BLAST analysis: Human, Mouse, Rat, Dog, Bovine, Rabbit, Guinea pig, Chicken, Zebrafish (100%) Xenopus (85%).

Product Details

Purification: Immunoaffinity purified

Target Details

Target: TAF12

Alternative Name: TAF12 ([TAF12 Products](#))

Background: Name/Gene ID: TAF12

Synonyms: TAF12, TAF2J, TAFII-20/TAFII-15, TAFII20/TAFII15, TAFII20

Gene ID: 6883

NCBI Accession: [NP_079855](#)

UniProt: [Q16514](#)

Application Details

Application Notes: Approved: WB (0.2 - 1 µg/mL)

Usage: Western Blot: Suggested dilution at 1 µg/mL in 5 % skim milk / PBS buffer, and HRP conjugated anti-Rabbit IgG should be diluted in 1: 50,000 - 100,000 as secondary antibody.

Comment: Target Species of Antibody: Mouse

Restrictions: For Research Use only

Handling

Format: Lyophilized

Reconstitution: Distilled water

Concentration: Lot specific

Buffer: Lyophilized from PBS with 2 % sucrose

Handling Advice: Avoid repeat freeze-thaw cycles.

Storage: 4 °C, -20 °C

Storage Comment: Long term: -20°C, the use of 50% glycerol is recommended if storing aliquots in -20°C for long term use (up to 1 year)

Short term (less than 1 week): 4°C. Avoid freeze-thaw cycles.

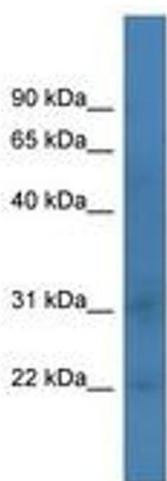


Image 1.