



[Go to Product page](#)

Datasheet for ABIN6746033
anti-HOXB1 antibody (C-Term)

1 Image

Overview

| | |
|----------------------|--|
| Quantity: | 100 µL |
| Target: | HOXB1 |
| Binding Specificity: | C-Term |
| Reactivity: | Human, Mouse, Rat, Dog, Cow, Horse, Rabbit, Pig, Guinea Pig, Hamster, Xenopus laevis, Bat, Chicken, Monkey |
| Host: | Rabbit |
| Clonality: | Polyclonal |
| Conjugate: | This HOXB1 antibody is un-conjugated |
| Application: | Western Blotting (WB) |

Product Details

| | |
|-----------------------|--|
| Immunogen: | Synthetic peptide from C-Terminus of mouse Hoxb1 (P17919, NP_032292). Percent identity by BLAST analysis: Human, Chimpanzee, Gorilla, Orangutan, Gibbon, Monkey, Galago, Marmoset, Mouse, Rat, Hamster, Elephant, Panda, Dog, Bovine, Bat, Rabbit, Horse, Pig, Opossum, Guinea pig, Chicken, Platypus, Xenopus, Stickleback, Medaka, Pufferfish (100%), Baboon, Turkey, Zebra finch, Armadillo, Lizard, Salmon, Zebrafish (90%). Type of Immunogen: Synthetic peptide |
| Specificity: | Mouse HOXB1 |
| Predicted Reactivity: | Percent identity by BLAST analysis: Human, Mouse, Rat, Dog, Bovine, Rabbit (100%) Chicken, Zebrafish (90%). |

Product Details

Purification: Immunoaffinity purified

Target Details

Target: HOXB1

Alternative Name: HOXB1 ([HOXB1 Products](#))

Background: Name/Gene ID: HOXB1

Synonyms: HOXB1, Homeo box B1, Homeobox protein Hox-2I, Hox-2.9, HCFP3, Homeobox protein Hox-B1, HOX2I, Homeobox B1, HOX2

Gene ID: 3211

NCBI Accession: [NP_032292](#)

UniProt: [P14653](#)

Application Details

Application Notes: Approved: WB (0.2 - 1 µg/mL)

Usage: Western Blot: Suggested dilution at 1 µg/mL in 5 % skim milk / PBS buffer, and HRP conjugated anti-Rabbit IgG should be diluted in 1: 50,000 - 100,000 as secondary antibody.

Comment: Target Species of Antibody: Mouse

Restrictions: For Research Use only

Handling

Format: Lyophilized

Reconstitution: Distilled water

Concentration: Lot specific

Buffer: Lyophilized from PBS with 2 % sucrose

Handling Advice: Avoid repeat freeze-thaw cycles.

Storage: 4 °C, -20 °C

Storage Comment: Long term: -20°C, the use of 50% glycerol is recommended if storing aliquots in -20°C for long term use (up to 1 year)

Handling

Short term (less than 1 week): 4°C. Avoid freeze-thaw cycles.

Images

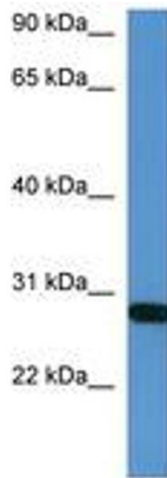


Image 1.