



[Go to Product page](#)

Datasheet for ABIN6746035

## anti-ETV1 antibody (AA 69-118)

1 Image

3 Publications

### Overview

Quantity:	100 µL
Target:	ETV1
Binding Specificity:	AA 69-118
Reactivity:	Human, Mouse, Rat, Cow, Dog, Horse, Rabbit, Guinea Pig, Hamster, Monkey, Pig, Bat
Host:	Rabbit
Clonality:	Polyclonal
Conjugate:	This ETV1 antibody is un-conjugated
Application:	Western Blotting (WB)

### Product Details

Immunogen:	Synthetic peptide located between aa69-118 of human ETV1 (P50549, NP_004947). Percent identity by BLAST analysis: Human, Gorilla, Orangutan, Gibbon, Galago, Marmoset, Mouse, Rat, Hamster, Panda, Dog, Bovine, Bat, Rabbit, Horse, Pig, Opossum, Guinea pig, Platypus, Lizard (100%), Turkey, Zebra finch, Chicken (92%), Stickleback (84%).  Type of Immunogen: Synthetic peptide
Specificity:	Human ETV1 / ER81
Predicted Reactivity:	Percent identity by BLAST analysis: Human, Mouse, Rat, Dog, Bovine, Horse, Pig (100%) Chicken (92%).
Purification:	Immunoaffinity purified

## Target Details

---

Target:	ETV1
Alternative Name:	ER81 / ETV1 ( <a href="#">ETV1 Products</a> )
Background:	Name/Gene ID: ETV1  Synonyms: ETV1, Ets-related protein 81, ER81, Ets variant 1, ETS translocation variant 1, Ets variant gene 1
Gene ID:	2115
NCBI Accession:	<a href="#">NP_004947</a>
UniProt:	<a href="#">P50549</a>

## Application Details

---

Application Notes:	Approved: WB (0.2 - 1 µg/mL)  Usage: Western Blot: Suggested dilution at 1 µg/mL in 5 % skim milk / PBS buffer, and HRP conjugated anti-Rabbit IgG should be diluted in 1: 50,000 - 100,000 as secondary antibody.
Comment:	Target Species of Antibody: Human
Restrictions:	For Research Use only

## Handling

---

Format:	Lyophilized
Reconstitution:	Distilled water
Concentration:	Lot specific
Buffer:	Lyophilized from PBS with 2 % sucrose
Handling Advice:	Avoid repeat freeze-thaw cycles.
Storage:	4 °C, -20 °C
Storage Comment:	Long term: -20°C, the use of 50% glycerol is recommended if storing aliquots in -20°C for long term use (up to 1 year)  Short term (less than 1 week): 4°C. Avoid freeze-thaw cycles.

## Publications

---

Product cited in:

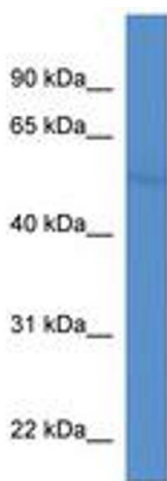
Saitoh, Pizzi, Wang: "Perturbation of SUMOlation enzyme Ubc9 by distinct domain within nucleoporin RanBP2/Nup358." in: **The Journal of biological chemistry**, Vol. 277, Issue 7, pp. 4755-63, (2002) ([PubMed](#)).

Christmann, Kaina: "Nuclear translocation of mismatch repair proteins MSH2 and MSH6 as a response of cells to alkylating agents." in: **The Journal of biological chemistry**, Vol. 275, Issue 46, pp. 36256-62, (2000) ([PubMed](#)).

Palombo, Gallinari, Iaccarino, Lettieri, Hughes, D'Arrigo, Truong, Hsuan, Jiricny: "GTBP, a 160-kilodalton protein essential for mismatch-binding activity in human cells." in: **Science (New York, N.Y.)**, Vol. 268, Issue 5219, pp. 1912-4, (1995) ([PubMed](#)).

## Images

---



**Image 1.**