

Datasheet for ABIN6746069
anti-EVI2A antibody (AA 154-203)[Go to Product page](#)

1 Image

Overview

Quantity:	100 µL
Target:	EVI2A
Binding Specificity:	AA 154-203
Reactivity:	Human, Mouse, Cow, Horse, Pig, Rabbit, Rat, Bat, Monkey
Host:	Rabbit
Clonality:	Polyclonal
Conjugate:	This EVI2A antibody is un-conjugated
Application:	Western Blotting (WB)

Product Details

Immunogen:	Synthetic peptide located between aa154-203 of human EVI2A (P22794, NP_055025). Percent identity by BLAST analysis: Human, Chimpanzee, Gorilla, Gibbon, Monkey, Galago, Marmoset, Mouse, Rat, Elephant, Panda, Bovine, Bat, Rabbit, Horse, Pig (100%), Guinea pig, Platypus (92%), Opossum (91%), Turkey, Zebra finch, Chicken (84%). Type of Immunogen: Synthetic peptide
Specificity:	Human EVI2A
Predicted Reactivity:	Percent identity by BLAST analysis: Human, Mouse, Rat, Bovine, Rabbit, Pig (100%) Guinea pig (92%) Chicken (84%).
Purification:	Immunoaffinity purified

Target Details

Target:	EVI2A
Alternative Name:	EVI2A (EVI2A Products)
Background:	Name/Gene ID: EVI2A Synonyms: EVI2A, EVI2, EVDA, EVI-2A, Protein EVI2A
Gene ID:	2123
NCBI Accession:	NP_055025
UniProt:	P22794

Application Details

Application Notes:	Approved: WB (0.2 - 1 µg/mL) Usage: Western Blot: Suggested dilution at 1 µg/mL in 5 % skim milk / PBS buffer, and HRP conjugated anti-Rabbit IgG should be diluted in 1: 50,000 - 100,000 as secondary antibody.
Comment:	Target Species of Antibody: Human
Restrictions:	For Research Use only

Handling

Format:	Lyophilized
Reconstitution:	Distilled water
Concentration:	Lot specific
Buffer:	Lyophilized from PBS with 2 % sucrose
Handling Advice:	Avoid repeat freeze-thaw cycles.
Storage:	4 °C, -20 °C
Storage Comment:	Long term: -20°C, the use of 50% glycerol is recommended if storing aliquots in -20°C for long term use (up to 1 year) Short term (less than 1 week): 4°C. Avoid freeze-thaw cycles.

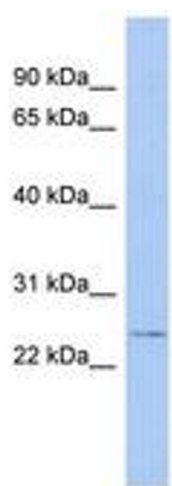


Image 1.