

Datasheet for ABIN6746077  
**anti-ARID3B antibody (AA 426-475)**[Go to Product page](#)

## 1 Image

## Overview

Quantity:	100 µL
Target:	ARID3B
Binding Specificity:	AA 426-475
Reactivity:	Human, Dog, Cow, Horse, Rabbit, Monkey
Host:	Rabbit
Clonality:	Polyclonal
Conjugate:	This ARID3B antibody is un-conjugated
Application:	Western Blotting (WB)

## Product Details

Immunogen:	Synthetic peptide located between aa426-475 of human ARID3B (NP_006456). Percent identity by BLAST analysis: Human, Chimpanzee, Gorilla, Gibbon, Monkey, Marmoset (100%), Mouse, Rat, Bat, Pig, Guinea pig (92%), Galago, Elephant, Dog, Bovine, Horse (85%), Rabbit, Platypus (84%), Panda, Opossum, Turkey, Zebra finch, Xenopus, Zebrafish (83%).  Type of Immunogen: Synthetic peptide
Specificity:	Human ARID3B
Predicted Reactivity:	Percent identity by BLAST analysis: Human (100%) Mouse, Rat, Pig, Guinea pig (92%) Dog, Bovine, Horse (85%) Rabbit (84%).
Purification:	Immunoaffinity purified

## Target Details

Target:	ARID3B
Alternative Name:	ARID3B ( <a href="#">ARID3B Products</a> )
Background:	Name/Gene ID: ARID3B  Synonyms: ARID3B, Bright-like protein, BDP, DRIL2, Bright and dead ringer protein
Gene ID:	10620
NCBI Accession:	<a href="#">NP_006456</a>
UniProt:	<a href="#">Q8IVW6</a>

## Application Details

Application Notes:	Approved: WB (0.2 - 1 µg/mL)  Usage: Western Blot: Suggested dilution at 1 µg/mL in 5 % skim milk / PBS buffer, and HRP conjugated anti-Rabbit IgG should be diluted in 1: 50,000 - 100,000 as secondary antibody.
Comment:	Target Species of Antibody: Human
Restrictions:	For Research Use only

## Handling

Format:	Lyophilized
Reconstitution:	Distilled water
Concentration:	Lot specific
Buffer:	Lyophilized from PBS with 2 % sucrose
Handling Advice:	Avoid repeat freeze-thaw cycles.
Storage:	4 °C, -20 °C
Storage Comment:	Long term: -20°C, the use of 50% glycerol is recommended if storing aliquots in -20°C for long term use (up to 1 year)  Short term (less than 1 week): 4°C. Avoid freeze-thaw cycles.

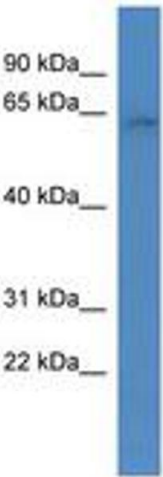


Image 1.