



[Go to Product page](#)

Datasheet for ABIN6746078  
**anti-CDR2L antibody (AA 386-435)**

1 Image

Overview

Quantity:	100 µL
Target:	CDR2L
Binding Specificity:	AA 386-435
Reactivity:	Human, Rat, Dog
Host:	Rabbit
Clonality:	Polyclonal
Conjugate:	This CDR2L antibody is un-conjugated
Application:	Western Blotting (WB)

Product Details

Immunogen:	Synthetic peptide located between aa386-435 of human CDR2L (Q86X02, NP_055418). Percent identity by BLAST analysis: Human, Chimpanzee, Gorilla (100%), Monkey, Panda, Horse, Pig (92%), Galago, Marmoset, Rat, Dog (85%).  Type of Immunogen: Synthetic peptide
Specificity:	Human CDR2L
Predicted Reactivity:	Percent identity by BLAST analysis: Human (100%) Horse, Pig (92%) Rat, Dog (85%).
Purification:	Immunoaffinity purified

Target Details

Target:	CDR2L
---------	-------

## Target Details

---

Alternative Name: CDR2L ([CDR2L Products](#))

---

Background: Name/Gene ID: CDR2L

Synonyms: CDR2L, HUMPPA, Paraneoplastic 62 kDa antigen, Paraneoplastic antigen

---

Gene ID: 30850

---

NCBI Accession: [NP\\_055418](#)

---

UniProt: [Q86X02](#)

---

## Application Details

---

Application Notes: Approved: WB (0.2 - 1 µg/mL)

Usage: Western Blot: Suggested dilution at 1 µg/mL in 5 % skim milk / PBS buffer, and HRP conjugated anti-Rabbit IgG should be diluted in 1: 50,000 - 100,000 as secondary antibody.

---

Comment: Target Species of Antibody: Human

---

Restrictions: For Research Use only

---

## Handling

---

Format: Lyophilized

---

Reconstitution: Distilled water

---

Concentration: Lot specific

---

Buffer: Lyophilized from PBS with 2 % sucrose

---

Handling Advice: Avoid repeat freeze-thaw cycles.

---

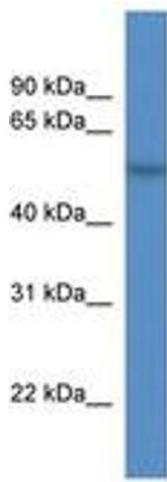
Storage: 4 °C, -20 °C

---

Storage Comment: Long term: -20°C, the use of 50% glycerol is recommended if storing aliquots in -20°C for long term use (up to 1 year)

Short term (less than 1 week): 4°C. Avoid freeze-thaw cycles.

---



**Image 1.**