

Datasheet for ABIN6746094  
**anti-F2RL2 antibody (AA 130-179)**[Go to Product page](#)

## 1 Image

## Overview

Quantity:	100 µL
Target:	F2RL2
Binding Specificity:	AA 130-179
Reactivity:	Human, Mouse, Rat, Cow, Bat, Dog, Monkey
Host:	Rabbit
Clonality:	Polyclonal
Application:	Western Blotting (WB)

## Product Details

Immunogen:	Synthetic peptide located between aa130-179 of rat F2 (P18292, NP_075213). Percent identity by BLAST analysis: Human, Gorilla, Orangutan, Gibbon, Monkey, Mouse, Rat, Dog, Bovine, Bat (100%), Sheep, Hamster, Elephant, Horse, Pig (92%), Rabbit (85%), Galago (84%).  Type of Immunogen: Synthetic peptide
Specificity:	Rat F2 / Thrombin
Predicted Reactivity:	Percent identity by BLAST analysis: Human, Mouse, Dog (100%) Sheep (92%) Rat (85%).
Purification:	Immunoaffinity purified

## Target Details

Target:	F2RL2
Alternative Name:	F2 / Prothrombin / Thrombin ( <a href="#">F2RL2 Products</a> )

## Target Details

Background:	Name/Gene ID: F2 Subfamily: Serine S1 Family: Protease  Synonyms: F2, Prothrombin B-chain, Coagulation factor II, FACTOR II, Prothrombin, PT, RPRGL2, Serine protease, THPH1, Thrombin
Gene ID:	2147
NCBI Accession:	<a href="#">NP_075213</a>
UniProt:	<a href="#">P00734</a>
Pathways:	<a href="#">Cell-Cell Junction Organization</a> , <a href="#">Regulation of G-Protein Coupled Receptor Protein Signaling</a>

## Application Details

Application Notes:	Approved: WB (1 µg/mL)  Usage: Western Blot: Suggested dilution at 1 µg/mL in 5 % skim milk / PBS buffer, and HRP conjugated anti-Rabbit IgG should be diluted in 1: 50,000 - 100,000 as secondary antibody.
Comment:	Target Species of Antibody: Rat
Restrictions:	For Research Use only

## Handling

Format:	Lyophilized
Reconstitution:	Distilled water
Concentration:	Lot specific
Buffer:	Lyophilized from PBS with 2 % sucrose
Handling Advice:	Avoid repeat freeze-thaw cycles.
Storage:	4 °C,-20 °C
Storage Comment:	Long term: -20°C, the use of 50% glycerol is recommended if storing aliquots in -20°C for long term use (up to 1 year) Short term (less than 1 week): 4°C. Avoid freeze-thaw cycles.

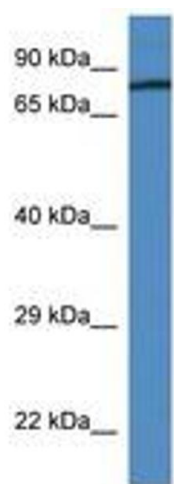


Image 1.