

Datasheet for ABIN6746101
anti-IER3IP1 antibody (AA 9-58)[Go to Product page](#)

1 Image

Overview

Quantity:	100 µL
Target:	IER3IP1
Binding Specificity:	AA 9-58
Reactivity:	Human, Mouse, Horse, Cow, Dog, Rabbit, Goat, Rat, Guinea Pig, Monkey, Bat, Pig
Host:	Rabbit
Clonality:	Polyclonal
Conjugate:	This IER3IP1 antibody is un-conjugated
Application:	Western Blotting (WB)

Product Details

Immunogen:	Synthetic peptide located between aa9-58 of mouse Ier3ip1 (Q9CR20, NP_079685). Percent identity by BLAST analysis: Human, Gorilla, Gibbon, Galago, Marmoset, Mouse, Rat, Goat, Elephant, Dog, Bovine, Bat, Rabbit, Horse, Pig, Opossum, Guinea pig, Zebra finch (100%), Xenopus (92%), Trout, Salmon (85%). Type of Immunogen: Synthetic peptide
Specificity:	Mouse IER3IP1
Predicted Reactivity:	Percent identity by BLAST analysis: Dog, Goat, Horse, Pig (100%).
Purification:	Immunoaffinity purified

Target Details

Target:	IER3IP1
Alternative Name:	IER3IP1 (IER3IP1 Products)
Background:	Name/Gene ID: IER3IP1 Synonyms: IER3IP1, HSPC039, MEDS, PRO2309
Gene ID:	51124
NCBI Accession:	NP_079685
UniProt:	Q9Y5U9

Application Details

Application Notes:	Approved: WB (0.2 - 1 µg/mL) Usage: Western Blot: Suggested dilution at 1 µg/mL in 5 % skim milk / PBS buffer, and HRP conjugated anti-Rabbit IgG should be diluted in 1: 50,000 - 100,000 as secondary antibody.
Comment:	Target Species of Antibody: Mouse
Restrictions:	For Research Use only

Handling

Format:	Lyophilized
Reconstitution:	Distilled water
Concentration:	Lot specific
Buffer:	Lyophilized from PBS with 2 % sucrose
Handling Advice:	Avoid repeat freeze-thaw cycles.
Storage:	4 °C, -20 °C
Storage Comment:	Long term: -20°C, the use of 50% glycerol is recommended if storing aliquots in -20°C for long term use (up to 1 year) Short term (less than 1 week): 4°C. Avoid freeze-thaw cycles.

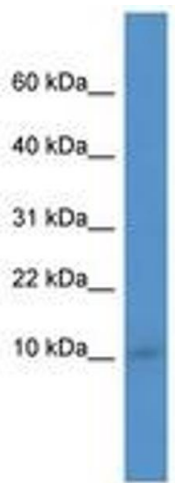


Image 1.