



[Go to Product page](#)

Datasheet for ABIN6746103

anti-C1ORF216 antibody (AA 51-100)

1 Image

2 Publications

Overview

Quantity:	100 µL
Target:	C1ORF216
Binding Specificity:	AA 51-100
Reactivity:	Rat, Human, Mouse, Horse, Monkey
Host:	Rabbit
Clonality:	Polyclonal
Conjugate:	This C1ORF216 antibody is un-conjugated
Application:	Western Blotting (WB)

Product Details

Immunogen:	Synthetic peptide located between aa51-100 of human C1orf216 (Q8TAB5, NP_689587). Percent identity by BLAST analysis: Human, Gorilla, Gibbon, Monkey, Galago, Marmoset, Mouse, Rat, Elephant, Horse (100%), Hamster, Bovine, Bat, Guinea pig (92%), Panda (85%). Type of Immunogen: Synthetic peptide
Specificity:	Human C1ORF216
Predicted Reactivity:	Percent identity by BLAST analysis:
Purification:	Immunoaffinity purified

Target Details

Target:	C1ORF216
---------	----------

Target Details

Alternative Name:	C1orf216 (C1ORF216 Products)
Background:	Name/Gene ID: C1orf216 Synonyms: C1orf216, UPF0500 protein C1orf216
Gene ID:	127703
NCBI Accession:	NP_689587
UniProt:	Q8TAB5

Application Details

Application Notes:	Approved: WB (0.2 - 1 µg/mL) Usage: Western Blot: Suggested dilution at 1 µg/mL in 5 % skim milk / PBS buffer, and HRP conjugated anti-Rabbit IgG should be diluted in 1: 50,000 - 100,000 as secondary antibody.
Comment:	Target Species of Antibody: Human
Restrictions:	For Research Use only

Handling

Format:	Lyophilized
Reconstitution:	Distilled water
Concentration:	Lot specific
Buffer:	Lyophilized from PBS with 2 % sucrose
Handling Advice:	Avoid repeat freeze-thaw cycles.
Storage:	4 °C,-20 °C
Storage Comment:	Long term: -20°C, the use of 50% glycerol is recommended if storing aliquots in -20°C for long term use (up to 1 year) Short term (less than 1 week): 4°C. Avoid freeze-thaw cycles.

Publications

Product cited in:	Saitoh, Pizzi, Wang: "Perturbation of SUMOlation enzyme Ubc9 by distinct domain within nucleoporin RanBP2/Nup358." in: The Journal of biological chemistry , Vol. 277, Issue 7, pp.
-------------------	--

Publications

4755-63, (2002) ([PubMed](#)).

Christmann, Kaina: "Nuclear translocation of mismatch repair proteins MSH2 and MSH6 as a response of cells to alkylating agents." in: **The Journal of biological chemistry**, Vol. 275, Issue 46, pp. 36256-62, (2000) ([PubMed](#)).

Palombo, Gallinari, Iaccarino, Lettieri, Hughes, D'Arrigo, Truong, Hsuan, Jirichny: "GTBP, a 160-kilodalton protein essential for mismatch-binding activity in human cells." in: **Science (New York, N.Y.)**, Vol. 268, Issue 5219, pp. 1912-4, (1995) ([PubMed](#)).

Images

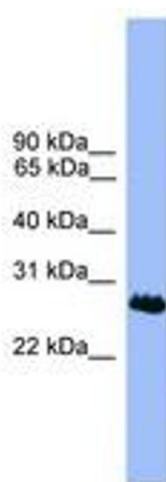


Image 1.