

Datasheet for ABIN6746106  
**anti-SCFD2 antibody (AA 219-268)**



[Go to Product page](#)

1 Image

## Overview

Quantity:	100 µL
Target:	SCFD2
Binding Specificity:	AA 219-268
Reactivity:	Human, Mouse, Cow, Pig
Host:	Rabbit
Clonality:	Polyclonal
Conjugate:	This SCFD2 antibody is un-conjugated
Application:	Western Blotting (WB)

## Product Details

Immunogen:	Synthetic peptide located between aa219-268 of mouse Scfd2 (Q3TR67, NP_848787). Percent identity by BLAST analysis: Human, Gorilla, Gibbon, Monkey, Mouse (100%), Orangutan, Marmoset, Rat, Rabbit, Horse, Opossum (92%), Bovine, Pig (85%).  Type of Immunogen: Synthetic peptide
Specificity:	Mouse SCFD2
Predicted Reactivity:	Percent identity by BLAST analysis: Human, Mouse (100%) Rat, Rabbit, Horse (92%) Bovine, Pig (85%).
Purification:	Immunoaffinity purified

## Target Details

---

Target:	SCFD2
Alternative Name:	SCFD2 ( <a href="#">SCFD2 Products</a> )
Background:	Name/Gene ID: SCFD2  Synonyms: SCFD2, STXBP1L1
Gene ID:	152579
NCBI Accession:	<a href="#">NP_848787</a>
UniProt:	<a href="#">Q8BTY8</a>

## Application Details

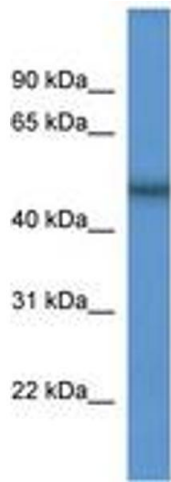
---

Application Notes:	Approved: WB (0.2 - 1 µg/mL)  Usage: Western Blot: Suggested dilution at 1 µg/mL in 5 % skim milk / PBS buffer, and HRP conjugated anti-Rabbit IgG should be diluted in 1: 50,000 - 100,000 as secondary antibody.
Comment:	Target Species of Antibody: Mouse
Restrictions:	For Research Use only

## Handling

---

Format:	Lyophilized
Reconstitution:	Distilled water
Concentration:	Lot specific
Buffer:	Lyophilized from PBS with 2 % sucrose
Handling Advice:	Avoid repeat freeze-thaw cycles.
Storage:	4 °C, -20 °C
Storage Comment:	Long term: -20°C, the use of 50% glycerol is recommended if storing aliquots in -20°C for long term use (up to 1 year)  Short term (less than 1 week): 4°C. Avoid freeze-thaw cycles.



**Image 1.**