

Datasheet for ABIN6746121  
**anti-KCNQ3 antibody (AA 580-629)**[Go to Product page](#)

## 1 Image

## Overview

Quantity:	100 µL
Target:	KCNQ3
Binding Specificity:	AA 580-629
Reactivity:	Human, Mouse, Rat, Pig, Cow, Dog, Guinea Pig, Horse, Rabbit, Monkey
Host:	Rabbit
Clonality:	Polyclonal
Conjugate:	This KCNQ3 antibody is un-conjugated
Application:	Western Blotting (WB)

## Product Details

Immunogen:	Synthetic peptide located between aa580-629 of mouse Kcnq3 (Q8K3F6, NP_690887). Percent identity by BLAST analysis: Human, Gorilla, Gibbon, Monkey, Marmoset, Mouse, Rat (100%), Galago, Elephant, Rabbit, Horse, Pig, Guinea pig (85%).  Type of Immunogen: Synthetic peptide
Specificity:	Mouse KCNQ3
Predicted Reactivity:	Percent identity by BLAST analysis: Human (100%) Mouse, Rat (92%) Rabbit, Horse, Pig, Guinea pig (85%).
Purification:	Immunoaffinity purified

## Target Details

Target:	KCNQ3
Alternative Name:	KCNQ3 ( <a href="#">KCNQ3 Products</a> )
Background:	Name/Gene ID: KCNQ3 Subfamily: Potassium channel - KCNQ Family: Ion Channel  Synonyms: KCNQ3, BFNC2, KV7.3, EBN2, KQT-like 3
Gene ID:	3786
NCBI Accession:	<a href="#">NP_690887</a>
UniProt:	<a href="#">O43525</a>

## Application Details

Application Notes:	Approved: WB (1 µg/mL)  Usage: Western Blot: Suggested dilution at 1 µg/mL in 5 % skim milk / PBS buffer, and HRP conjugated anti-Rabbit IgG should be diluted in 1: 50,000 - 100,000 as secondary antibody.
Comment:	Target Species of Antibody: Mouse
Restrictions:	For Research Use only

## Handling

Format:	Lyophilized
Reconstitution:	Distilled water
Concentration:	Lot specific
Buffer:	Lyophilized from PBS with 2 % sucrose
Handling Advice:	Avoid repeat freeze-thaw cycles.
Storage:	4 °C, -20 °C
Storage Comment:	Long term: -20°C, the use of 50% glycerol is recommended if storing aliquots in -20°C for long term use (up to 1 year) Short term (less than 1 week): 4°C. Avoid freeze-thaw cycles.

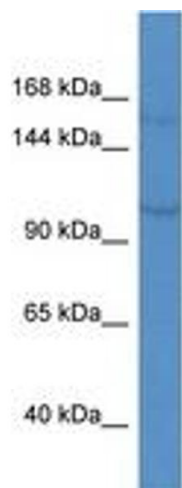


Image 1.