



Datasheet for ABIN6746123  
**anti-CACNG3 antibody (AA 162-211)**



[Go to Product page](#)

1 Image

Overview

Quantity:	100 µL
Target:	CACNG3
Binding Specificity:	AA 162-211
Reactivity:	Human, Mouse, Rat, Cow, Dog, Guinea Pig, Horse, Rabbit, Bat, Monkey, Pig
Host:	Rabbit
Clonality:	Polyclonal
Conjugate:	This CACNG3 antibody is un-conjugated
Application:	Western Blotting (WB)

Product Details

Immunogen:	Synthetic peptide located between aa162-211 of mouse Cacng3 (Q9JJV5, NP_062303). Percent identity by BLAST analysis: Human, Gorilla, Orangutan, Gibbon, Monkey, Galago, Marmoset, Mouse, Rat, Elephant, Panda, Dog, Bovine, Bat, Rabbit, Horse, Pig, Guinea pig (100%), Opossum, Turkey, Chicken, Platypus, Pufferfish, Zebrafish (92%), Xenopus (86%).  Type of Immunogen: Synthetic peptide
Specificity:	Mouse CACNG3
Predicted Reactivity:	Percent identity by BLAST analysis: Dog, Pig (100%) Chicken (92%).
Purification:	Immunoaffinity purified

## Target Details

---

Target:	CACNG3
Alternative Name:	CACNG3 ( <a href="#">CACNG3 Products</a> )
Background:	Name/Gene ID: CACNG3 Subfamily: Calcium channel - gamma subunit Family: Ion Channel  Synonyms: CACNG3, Gamma 3, TARP gamma-3
Gene ID:	10368
NCBI Accession:	<a href="#">NP_062303</a>
UniProt:	<a href="#">O60359</a>

## Application Details

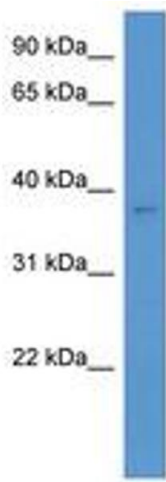
---

Application Notes:	Approved: WB (0.2 - 1 µg/mL)  Usage: Western Blot: Suggested dilution at 1 µg/mL in 5 % skim milk / PBS buffer, and HRP conjugated anti-Rabbit IgG should be diluted in 1: 50,000 - 100,000 as secondary antibody.
Comment:	Target Species of Antibody: Mouse
Restrictions:	For Research Use only

## Handling

---

Format:	Lyophilized
Reconstitution:	Distilled water
Concentration:	Lot specific
Buffer:	Lyophilized from PBS with 2 % sucrose
Handling Advice:	Avoid repeat freeze-thaw cycles.
Storage:	4 °C,-20 °C
Storage Comment:	Long term: -20°C, the use of 50% glycerol is recommended if storing aliquots in -20°C for long term use (up to 1 year) Short term (less than 1 week): 4°C. Avoid freeze-thaw cycles.



**Image 1.**