

Datasheet for ABIN6746126  
**anti-KCNH8 antibody (AA 960-1009)**[Go to Product page](#)

## 1 Image

## Overview

Quantity:	100 µL
Target:	KCNH8
Binding Specificity:	AA 960-1009
Reactivity:	Human, Rat, Mouse, Dog, Pig, Monkey
Host:	Rabbit
Clonality:	Polyclonal
Conjugate:	This KCNH8 antibody is un-conjugated
Application:	Western Blotting (WB)

## Product Details

Immunogen:	Synthetic peptide located between aa960-1009 of mouse Kcnh8 (P59111, NP_001026981). Percent identity by BLAST analysis: Human, Gorilla, Gibbon, Monkey, Galago, Marmoset, Mouse, Panda, Dog, Pig (100%), Opossum, Platypus (92%), Rabbit (91%), Rat (84%).  Type of Immunogen: Synthetic peptide
Specificity:	Mouse KCNH8 / Kv12.1
Predicted Reactivity:	Percent identity by BLAST analysis: Human, Dog, Pig (100%) Mouse (92%) Rabbit (91%) Rat (84%).
Purification:	Immunoaffinity purified

## Target Details

Target:	KCNH8
Alternative Name:	KCNH8 / ELK ( <a href="#">KCNH8 Products</a> )
Background:	Name/Gene ID: KCNH8 Subfamily: Potassium channel - Eag-related Family: Ion Channel  Synonyms: KCNH8, ELK channel 3, ELK, HEIk1, Kv12.1
Gene ID:	131096
NCBI Accession:	<a href="#">NP_001026981</a>
UniProt:	<a href="#">Q96L42</a>
Pathways:	<a href="#">RTK Signaling</a>

## Application Details

Application Notes:	Approved: WB (1 µg/mL)  Usage: Western Blot: Suggested dilution at 1 µg/mL in 5 % skim milk / PBS buffer, and HRP conjugated anti-Rabbit IgG should be diluted in 1: 50,000 - 100,000 as secondary antibody.
Comment:	Target Species of Antibody: Mouse
Restrictions:	For Research Use only

## Handling

Format:	Lyophilized
Reconstitution:	Distilled water
Concentration:	Lot specific
Buffer:	Lyophilized from PBS with 2 % sucrose
Handling Advice:	Avoid repeat freeze-thaw cycles.
Storage:	4 °C, -20 °C
Storage Comment:	Long term: -20°C, the use of 50% glycerol is recommended if storing aliquots in -20°C for long term use (up to 1 year) Short term (less than 1 week): 4°C. Avoid freeze-thaw cycles.

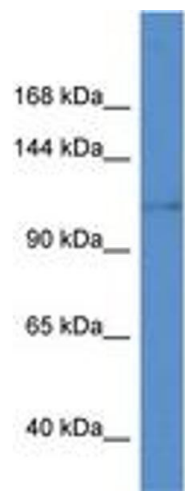


Image 1.