



[Go to Product page](#)

Datasheet for ABIN6746154  
**anti-PHOX2A antibody (C-Term)**

1 Image

### Overview

Quantity:	100 µL
Target:	PHOX2A
Binding Specificity:	C-Term
Reactivity:	Human, Rat, Mouse, Cow, Dog, Guinea Pig, Horse, Pig, Monkey
Host:	Rabbit
Clonality:	Polyclonal
Conjugate:	This PHOX2A antibody is un-conjugated
Application:	Western Blotting (WB)

### Product Details

Immunogen:	Synthetic peptide from C-Terminus of human PHOX2A (O14813, NP_005160). Percent identity by BLAST analysis: Human, Chimpanzee, Gorilla, Gibbon, Monkey, Galago, Marmoset, Mouse, Rat, Elephant, Dog, Bovine, Horse, Pig, Guinea pig (100%), Stickleback (85%).  Type of Immunogen: Synthetic peptide
Specificity:	Human PHOX2A
Predicted Reactivity:	Percent identity by BLAST analysis: Human, Rat, Dog, Bovine, Pig (100%).
Purification:	Immunoaffinity purified

### Target Details

Target:	PHOX2A
---------	--------

## Target Details

---

Alternative Name: PHOX2A ([PHOX2A Products](#))

Background: Name/Gene ID: PHOX2A

Synonyms: PHOX2A, Aristaless homeobox homolog, ARIX1 homeodomain protein, Arix homeodomain protein, CFEOM2, FEOM2, Paired-like homeobox 2a, PMX2A, ARIX

Gene ID: 401

NCBI Accession: [NP\\_005160](#)

UniProt: [O14813](#)

## Application Details

---

Application Notes: Approved: WB (0.2 - 1 µg/mL)

Usage: Western Blot: Suggested dilution at 1 µg/mL in 5 % skim milk / PBS buffer, and HRP conjugated anti-Rabbit IgG should be diluted in 1: 50,000 - 100,000 as secondary antibody.

Not recommended for: IHC-P

Comment: Target Species of Antibody: Human

Restrictions: For Research Use only

## Handling

---

Format: Lyophilized

Reconstitution: Distilled water

Concentration: Lot specific

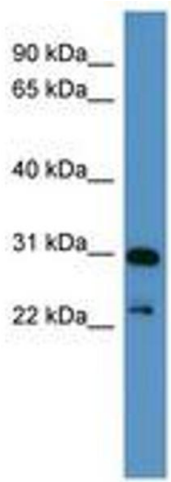
Buffer: Lyophilized from PBS with 2 % sucrose

Handling Advice: Avoid repeat freeze-thaw cycles.

Storage: 4 °C, -20 °C

Storage Comment: Long term: -20°C, the use of 50% glycerol is recommended if storing aliquots in -20°C for long term use (up to 1 year)

Short term (less than 1 week): 4°C. Avoid freeze-thaw cycles.



**Image 1.**