



[Go to Product page](#)

Datasheet for ABIN6746161
anti-SPDEF/PSE antibody (C-Term)

1 Image

Overview

Quantity:	100 µL
Target:	SPDEF/PSE (SPDEF)
Binding Specificity:	C-Term
Reactivity:	Human, Mouse, Rat, Cow, Rabbit, Dog, Horse, Guinea Pig, Monkey, Hamster, Bat, Chicken, Drosophila melanogaster, Xenopus laevis
Host:	Rabbit
Clonality:	Polyclonal
Conjugate:	This SPDEF/PSE antibody is un-conjugated
Application:	Western Blotting (WB)

Product Details

Immunogen:	Synthetic peptide from C-Terminus of human SPDEF (O95238, NP_036523). Percent identity by BLAST analysis: Human, Chimpanzee, Gorilla, Gibbon, Monkey, Galago, Marmoset, Mouse, Rat, Hamster, Elephant, Panda, Dog, Bovine, Bat, Rabbit, Horse, Opossum, Guinea pig, Zebra finch, Chicken, Platypus, Lizard, Xenopus, Seabass, Stickleback, Drosophila, Beetle (100%), Pig (92%). Type of Immunogen: Synthetic peptide
Specificity:	Human SPDEF
Predicted Reactivity:	Percent identity by BLAST analysis: Human, Mouse, Rat, Dog, Bovine, Rabbit, Chicken (100%) Pig (92%).
Purification:	Immunoaffinity purified

Target Details

Target:	SPDEF/PSE (SPDEF)
Alternative Name:	PDEF / SPDEF (SPDEF Products)
Background:	Name/Gene ID: SPDEF Subfamily: ETS Family: Transcription factor Synonyms: SPDEF, BA375E1.3, PDEF, RP11-375E1__A.3, Prostate-derived Ets factor, Prostate-specific Ets, PSE
Gene ID:	25803
NCBI Accession:	NP_036523
UniProt:	O95238

Application Details

Application Notes:	Approved: WB (1 µg/mL) Usage: Western Blot: Suggested dilution at 1 µg/mL in 5 % skim milk / PBS buffer, and HRP conjugated anti-Rabbit IgG should be diluted in 1: 50,000 - 100,000 as secondary antibody.
Comment:	Target Species of Antibody: Human
Restrictions:	For Research Use only

Handling

Format:	Lyophilized
Reconstitution:	Distilled water
Concentration:	Lot specific
Buffer:	Lyophilized from PBS with 2 % sucrose
Handling Advice:	Avoid repeat freeze-thaw cycles.
Storage:	4 °C, -20 °C
Storage Comment:	Long term: -20°C, the use of 50% glycerol is recommended if storing aliquots in -20°C for long term use (up to 1 year) Short term (less than 1 week): 4°C. Avoid freeze-thaw cycles.

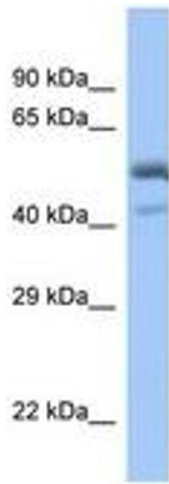


Image 1.