



Datasheet for ABIN6746164

## anti-WW Domain Binding Protein 5 (WBP5) (AA 44-93) antibody



[Go to Product page](#)

### 1 Image

#### Overview

Quantity:	100 µL
Target:	WW Domain Binding Protein 5 (WBP5)
Binding Specificity:	AA 44-93
Reactivity:	Human, Cow, Rabbit, Rat, Monkey
Host:	Rabbit
Clonality:	Polyclonal
Conjugate:	Un-conjugated
Application:	Western Blotting (WB)

#### Product Details

Immunogen:	Synthetic peptide located between aa44-93 of human WBP5 (Q9UHQ7, NP_057387). Percent identity by BLAST analysis: Human, Chimpanzee, Gorilla, Gibbon, Monkey, Rabbit (100%), Marmoset, Panda, Horse, Pig (85%), Rat (78%).  Type of Immunogen: Synthetic peptide
Specificity:	Human WBP5
Predicted Reactivity:	Percent identity by BLAST analysis: Human, Rabbit (100%).
Purification:	Immunoaffinity purified

#### Target Details

Target:	WW Domain Binding Protein 5 (WBP5)
---------	------------------------------------

## Target Details

---

Alternative Name: WBP5 ([WBP5 Products](#))

Background: Name/Gene ID: WBP5

Synonyms: WBP5, TCEAL9, N4, WW domain binding protein 1, WW domain binding protein 5, Pp21 homolog, WBP-5, WW domain-binding protein 5

Gene ID: 51186

NCBI Accession: [NP\\_057387](#)

UniProt: [Q9UHQ7](#)

## Application Details

---

Application Notes: Approved: WB (0.2 - 1 µg/mL)

Usage: Western Blot: Suggested dilution at 1 µg/mL in 5 % skim milk / PBS buffer, and HRP conjugated anti-Rabbit IgG should be diluted in 1: 50,000 - 100,000 as secondary antibody.

Comment: Target Species of Antibody: Human

Restrictions: For Research Use only

## Handling

---

Format: Lyophilized

Reconstitution: Distilled water

Concentration: Lot specific

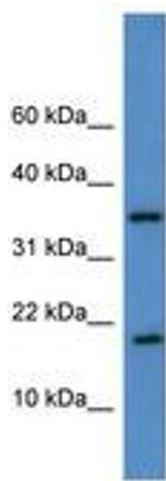
Buffer: Lyophilized from PBS with 2 % sucrose

Handling Advice: Avoid repeat freeze-thaw cycles.

Storage: 4 °C, -20 °C

Storage Comment: Long term: -20°C, the use of 50% glycerol is recommended if storing aliquots in -20°C for long term use (up to 1 year)

Short term (less than 1 week): 4°C. Avoid freeze-thaw cycles.



**Image 1.**