



[Go to Product page](#)

Datasheet for ABIN6746172
anti-BCL11A antibody (C-Term)

1 Image

Overview

Quantity:	100 µL
Target:	BCL11A
Binding Specificity:	C-Term
Reactivity:	Human, Mouse, Rat, Cow, Dog, Guinea Pig, Rabbit, Pig, Zebrafish (Danio rerio), Chicken, Xenopus laevis, Bat, Monkey
Host:	Rabbit
Clonality:	Polyclonal
Conjugate:	This BCL11A antibody is un-conjugated
Application:	Western Blotting (WB)

Product Details

Immunogen:	Synthetic peptide from C-Terminus of human BCL11A (Q9H165, NP_075044). Percent identity by BLAST analysis: Human, Gorilla, Gibbon, Baboon, Monkey, Galago, Marmoset, Mouse, Rat, Shrew, Elephant, Panda, Dog, Bovine, Bat, Rabbit, Pig, Opossum, Guinea pig, Turkey, Zebra finch, Chicken, Armadillo, Platypus, Lizard, Xenopus, Zebrafish (100%). Type of Immunogen: Synthetic peptide
Specificity:	Human BCL11A
Predicted Reactivity:	Percent identity by BLAST analysis: Human, Mouse, Rat, Rabbit, Guinea pig, Chicken, Zebrafish (100%).
Purification:	Immunoaffinity purified

Target Details

Target:	BCL11A
Alternative Name:	BCL11A (BCL11A Products)
Background:	Name/Gene ID: BCL11A Family: Cancer Synonyms: BCL11A, B-cell CLL/lymphoma 11A, BCL11A-L, BCL11A-XL, BCL11a-M, B-cell lymphoma/leukemia 11A, BCL-11A, BCL11A-S, CTIP1, COUP-TF-interacting protein 1, HBFQTL5, EVI-9, KIAA1809, ZNF856, C2H2-type zinc finger protein, EVI9, Zinc finger protein 856
Gene ID:	53335
NCBI Accession:	NP_075044
UniProt:	Q9H165
Pathways:	Regulation of Cell Size

Application Details

Application Notes:	Approved: WB (0.2 - 1 µg/mL) Usage: Western Blot: Suggested dilution at 1 µg/mL in 5 % skim milk / PBS buffer, and HRP conjugated anti-Rabbit IgG should be diluted in 1: 50,000 - 100,000 as secondary antibody.
Comment:	Target Species of Antibody: Human
Restrictions:	For Research Use only

Handling

Format:	Lyophilized
Reconstitution:	Distilled water
Concentration:	Lot specific
Buffer:	Lyophilized from PBS with 2 % sucrose
Handling Advice:	Avoid repeat freeze-thaw cycles.
Storage:	4 °C,-20 °C
Storage Comment:	Long term: -20°C, the use of 50% glycerol is recommended if storing aliquots in -20°C for long term use (up to 1 year)

Handling

Short term (less than 1 week): 4°C. Avoid freeze-thaw cycles.

Images

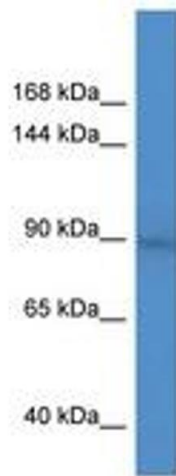


Image 1.