



[Go to Product page](#)

Datasheet for ABIN6746175
anti-DLX4 antibody (AA 31-80)

1 Image

Overview

Quantity:	100 µL
Target:	DLX4
Binding Specificity:	AA 31-80
Reactivity:	Human, Rabbit, Monkey
Host:	Rabbit
Clonality:	Polyclonal
Conjugate:	This DLX4 antibody is un-conjugated
Application:	Western Blotting (WB)

Product Details

Immunogen:	Synthetic peptide located between aa31-80 of human DLX4 (Q92988, NP_612138). Percent identity by BLAST analysis: Human, Monkey, Marmoset, Rabbit (100%), Gorilla (92%), Galago, Elephant, Bovine, Bat (90%). Type of Immunogen: Synthetic peptide
Specificity:	Human DLX4
Predicted Reactivity:	Percent identity by BLAST analysis: Human, Rabbit (100%) Bovine (90%).
Purification:	Immunoaffinity purified

Target Details

Target:	DLX4
---------	------

Target Details

Alternative Name: BP1 / DLX4 ([DLX4 Products](#))

Background: Name/Gene ID: DLX4

Synonyms: DLX4, Beta protein 1, BP1, DLX7, DLX8, DLX9, Distal-less homeo box 7, Distal-less homeo box 9, Distal-less homeobox 4, Homeobox protein DLX-7, Homeobox protein DLX-8, Homeobox protein DLX-4

Gene ID: 1748

NCBI Accession: [NP_612138](#)

UniProt: [Q92988](#)

Application Details

Application Notes: Approved: WB (0.2 - 1 µg/mL)

Usage: Western Blot: Suggested dilution at 1 µg/mL in 5 % skim milk / PBS buffer, and HRP conjugated anti-Rabbit IgG should be diluted in 1: 50,000 - 100,000 as secondary antibody.

Comment: Target Species of Antibody: Human

Restrictions: For Research Use only

Handling

Format: Lyophilized

Reconstitution: Distilled water

Concentration: Lot specific

Buffer: Lyophilized from PBS with 2 % sucrose

Handling Advice: Avoid repeat freeze-thaw cycles.

Storage: 4 °C, -20 °C

Storage Comment: Long term: -20°C, the use of 50% glycerol is recommended if storing aliquots in -20°C for long term use (up to 1 year)

Short term (less than 1 week): 4°C. Avoid freeze-thaw cycles.

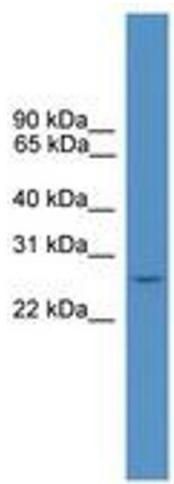


Image 1.