

Datasheet for ABIN6746191
anti-PTBP3 antibody (AA 112-161)[Go to Product page](#)

1 Image

Overview

Quantity:	100 µL
Target:	PTBP3
Binding Specificity:	AA 112-161
Reactivity:	Human, Mouse, Rat, Rabbit, Guinea Pig, Xenopus laevis, Monkey
Host:	Rabbit
Clonality:	Polyclonal
Conjugate:	This PTBP3 antibody is un-conjugated
Application:	Western Blotting (WB)

Product Details

Immunogen:	Synthetic peptide located between aa112-161 of mouse Ptbp3 (Q8BHD7-2, NP_659153). Percent identity by BLAST analysis: Human, Gorilla, Gibbon, Galago, Marmoset, Mouse, Rat, Elephant, Rabbit, Guinea pig, Lizard, Xenopus (100%), Bovine, Horse, Pig, Opossum, Zebra finch, Platypus (92%), Chicken (91%), Bat (85%). Type of Immunogen: Synthetic peptide
Specificity:	Mouse ROD1
Predicted Reactivity:	Percent identity by BLAST analysis: Mouse, Rabbit (100%) Bovine, Horse, Pig (92%).
Purification:	Immunoaffinity purified

Target Details

Target:	PTBP3
Alternative Name:	ROD1 (PTBP3 Products)
Background:	Name/Gene ID: PTBP3 Synonyms: PTBP3, ROD1, Regulator of differentiation 1
Gene ID:	9991
NCBI Accession:	NP_659153
UniProt:	O95758

Application Details

Application Notes:	Approved: WB (0.2 - 1 µg/mL) Usage: Western Blot: Suggested dilution at 1 µg/mL in 5 % skim milk / PBS buffer, and HRP conjugated anti-Rabbit IgG should be diluted in 1: 50,000 - 100,000 as secondary antibody.
Comment:	Target Species of Antibody: Mouse
Restrictions:	For Research Use only

Handling

Format:	Lyophilized
Reconstitution:	Distilled water
Concentration:	Lot specific
Buffer:	Lyophilized from PBS with 2 % sucrose
Handling Advice:	Avoid repeat freeze-thaw cycles.
Storage:	4 °C, -20 °C
Storage Comment:	Long term: -20°C, the use of 50% glycerol is recommended if storing aliquots in -20°C for long term use (up to 1 year) Short term (less than 1 week): 4°C. Avoid freeze-thaw cycles.

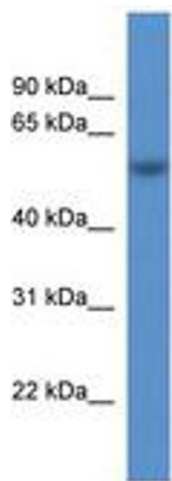


Image 1.