



[Go to Product page](#)

Datasheet for ABIN6746195  
**anti-ZMAT2 antibody (AA 25-74)**

1 Image

### Overview

|                      |   |
|----------------------|---|
| Quantity:            | 100 µL  |
| Target:              | ZMAT2   |
| Binding Specificity: | AA 25-74  |
| Reactivity:          | Human, Mouse, Rat, Cow, Dog, Horse, Rabbit, Zebrafish (Danio rerio), Guinea Pig, Pig, Chicken, Hamster, Monkey, Bat |
| Host:                | Rabbit  |
| Clonality:           | Polyclonal  |
| Conjugate:           | This ZMAT2 antibody is un-conjugated  |
| Application:         | Western Blotting (WB)   |

### Product Details

|                       |  |
|-----------------------|--|
| Immunogen:            | Synthetic peptide located between aa25-74 of human ZMAT2 (Q96NC0, NP_653324). Percent identity by BLAST analysis: Human, Chimpanzee, Gorilla, Monkey, Galago, Marmoset, Mouse, Rat, Hamster, Elephant, Panda, Dog, Bovine, Bat, Rabbit, Horse, Pig, Guinea pig, Turkey, Chicken, Platypus, Lizard (100%), Opossum (92%), Xenopus (91%), Zebrafish (85%).<br><br>Type of Immunogen: Synthetic peptide |
| Specificity:          | Human ZMAT2  |
| Predicted Reactivity: | Percent identity by BLAST analysis: Human, Mouse, Rat, Dog, Bovine, Chicken (100%) Xenopus, Zebrafish (85%).   |
| Purification:         | Immunoaffinity purified  |

## Target Details

---

|                   |   |
|-------------------|---|
| Target:           | ZMAT2   |
| Alternative Name: | ZMAT2 ( <a href="#">ZMAT2 Products</a> )  |
| Background:       | Name/Gene ID: ZMAT2<br><br>Synonyms: ZMAT2, HSNU23, Snu23, Zinc finger, matrin type 2, Ptg-12, Zinc finger, matrin-type 2 |
| Gene ID:          | 153527  |
| NCBI Accession:   | <a href="#">NP_653324</a>   |
| UniProt:          | <a href="#">Q96NC0</a>  |

## Application Details

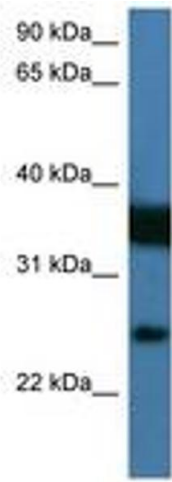
---

|                    |  |
|--------------------|--|
| Application Notes: | Approved: WB (0.2 - 1 µg/mL)<br><br>Usage: Western Blot: Suggested dilution at 1 µg/mL in 5 % skim milk / PBS buffer, and HRP conjugated anti-Rabbit IgG should be diluted in 1: 50,000 - 100,000 as secondary antibody. |
| Comment:           | Target Species of Antibody: Human  |
| Restrictions:      | For Research Use only  |

## Handling

---

|                  |   |
|------------------|---|
| Format:          | Lyophilized   |
| Reconstitution:  | Distilled water   |
| Concentration:   | Lot specific  |
| Buffer:          | Lyophilized from PBS with 2 % sucrose   |
| Handling Advice: | Avoid repeat freeze-thaw cycles.  |
| Storage:         | 4 °C, -20 °C  |
| Storage Comment: | Long term: -20°C, the use of 50% glycerol is recommended if storing aliquots in -20°C for long term use (up to 1 year)<br><br>Short term (less than 1 week): 4°C. Avoid freeze-thaw cycles. |



**Image 1.**