

Datasheet for ABIN6746205
anti-GJC3 antibody (AA 41-90)[Go to Product page](#)

1 Image

Overview

Quantity:	100 µL
Target:	GJC3 (GJc3)
Binding Specificity:	AA 41-90
Reactivity:	Mouse, Rat
Host:	Rabbit
Clonality:	Polyclonal
Conjugate:	This GJC3 antibody is un-conjugated
Application:	Western Blotting (WB)

Product Details

Immunogen:	Synthetic peptide located between aa41-90 of mouse Gjc3 (Q921C1, NP_536698). Percent identity by BLAST analysis: Mouse, Rat (100%).
	Type of Immunogen: Synthetic peptide
Specificity:	Mouse GJE1
Predicted Reactivity:	Percent identity by BLAST analysis:
Purification:	Immunoaffinity purified

Target Details

Target:	GJC3 (GJc3)
Alternative Name:	GJC3 / GJE1 (GJc3 Products)

Target Details

Background:	Name/Gene ID: GJC3 Synonyms: GJC3, CX31.3, Connexin-31.3, CX29, CX30.2, Gap junction epsilon-1 protein, Connexin 29, Connexin-30.2, Gap junction gamma-3 protein
Gene ID:	349149
NCBI Accession:	NP_536698
UniProt:	Q8NFK1
Pathways:	Sensory Perception of Sound

Application Details

Application Notes:	Approved: WB (0.2 - 1 µg/mL) Usage: Western Blot: Suggested dilution at 1 µg/mL in 5 % skim milk / PBS buffer, and HRP conjugated anti-Rabbit IgG should be diluted in 1: 50,000 - 100,000 as secondary antibody.
Comment:	Target Species of Antibody: Mouse
Restrictions:	For Research Use only

Handling

Format:	Lyophilized
Reconstitution:	Distilled water
Concentration:	Lot specific
Buffer:	Lyophilized from PBS with 2 % sucrose
Handling Advice:	Avoid repeat freeze-thaw cycles.
Storage:	4 °C, -20 °C
Storage Comment:	Long term: -20°C, the use of 50% glycerol is recommended if storing aliquots in -20°C for long term use (up to 1 year) Short term (less than 1 week): 4°C. Avoid freeze-thaw cycles.

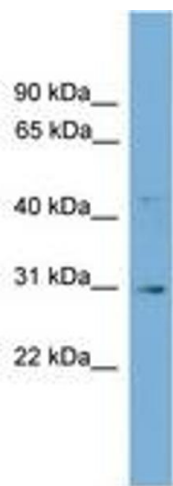


Image 1.