

Datasheet for ABIN6746218 **anti-GCDH antibody (AA 360-409)**



[Go to Product page](#)

1 Image

Overview

Quantity:	100 µL
Target:	GCDH
Binding Specificity:	AA 360-409
Reactivity:	Human, Rat, Pig, Cow, Guinea Pig, Monkey
Host:	Rabbit
Clonality:	Polyclonal
Conjugate:	This GCDH antibody is un-conjugated
Application:	Western Blotting (WB)

Product Details

Immunogen:	Synthetic peptide located between aa360-409 of rat Gcdh (D3ZT90, NP_001102366). Percent identity by BLAST analysis: Human, Gorilla, Orangutan, Gibbon, Monkey, Galago, Marmoset, Rat, Bovine (100%), Mouse, Panda, Dog, Bat, Rabbit, Horse, Opossum (92%), Elephant, Pig, Platypus, Lizard (85%), Guinea pig (84%). Type of Immunogen: Synthetic peptide
Specificity:	Rat GCDH
Predicted Reactivity:	Percent identity by BLAST analysis: Human, Bovine (100%) Mouse, Rat, Dog, Rabbit, Horse (92%) Pig (85%) Guinea pig (84%).
Purification:	Immunoaffinity purified

Target Details

Target:	GCDH
Alternative Name:	GCD / GCDH (GCDH Products)
Background:	Name/Gene ID: GCDH Synonyms: GCDH, ACAD5, Glutaryl-CoA dehydrogenase, GCD
Gene ID:	2639
NCBI Accession:	NP_001102366
UniProt:	Q92947

Application Details

Application Notes:	Approved: WB (1 µg/mL) Usage: Western Blot: Suggested dilution at 1 µg/mL in 5 % skim milk / PBS buffer, and HRP conjugated anti-Rabbit IgG should be diluted in 1: 50,000 - 100,000 as secondary antibody.
Comment:	Target Species of Antibody: Rat
Restrictions:	For Research Use only

Handling

Format:	Lyophilized
Reconstitution:	Distilled water
Concentration:	Lot specific
Buffer:	Lyophilized from PBS with 2 % sucrose
Handling Advice:	Avoid repeat freeze-thaw cycles.
Storage:	4 °C, -20 °C
Storage Comment:	Long term: -20°C, the use of 50% glycerol is recommended if storing aliquots in -20°C for long term use (up to 1 year) Short term (less than 1 week): 4°C. Avoid freeze-thaw cycles.

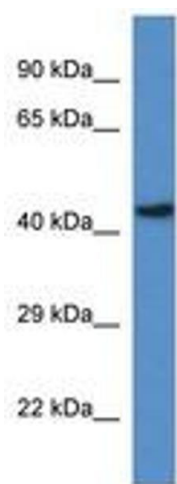


Image 1.