



Datasheet for ABIN6746220
anti-ABCF1 antibody (AA 558-607)



[Go to Product page](#)

1 Image

Overview

Quantity:	100 µL
Target:	ABCF1
Binding Specificity:	AA 558-607
Reactivity:	Human, Rat, Mouse, Pig, Cow, Rabbit, Horse, Zebrafish (Danio rerio), Dog, Monkey, Bat
Host:	Rabbit
Clonality:	Polyclonal
Conjugate:	This ABCF1 antibody is un-conjugated
Application:	Western Blotting (WB)

Product Details

Immunogen:	Synthetic peptide located between aa558-607 of rat Abcf1 (Q6MG08, NP_001103353). Percent identity by BLAST analysis: Human, Chimpanzee, Gorilla, Gibbon, Monkey, Galago, Marmoset, Mouse, Rat, Elephant, Dog, Bovine, Bat, Rabbit, Horse, Pig, Opossum, Salmon, Stickleback, Zebrafish (100%), Xenopus (92%). Type of Immunogen: Synthetic peptide
Specificity:	Mouse ABCF1
Predicted Reactivity:	Percent identity by BLAST analysis: Human, Mouse, Rat, Dog, Bovine, Rabbit, Horse, Pig, Zebrafish (100%) Xenopus (92%).
Purification:	Immunoaffinity purified

Target Details

Target: ABCF1

Alternative Name: ABCF1 ([ABCF1 Products](#))

Background: Name/Gene ID: ABCF1
Subfamily: ATP-binding cassette - ABCF/GCN20
Family: Transporter

Synonyms: ABCF1, ABC27, ABC50, EST123147, ATP-binding cassette 50

Gene ID: 23

NCBI Accession: [NP_001103353](#)

UniProt: [Q8NE71](#)

Application Details

Application Notes: Approved: WB (0.2 - 1 µg/mL)

Usage: Western Blot: Suggested dilution at 1 µg/mL in 5 % skim milk / PBS buffer, and HRP conjugated anti-Rabbit IgG should be diluted in 1: 50,000 - 100,000 as secondary antibody.

Comment: Target Species of Antibody: Rat

Restrictions: For Research Use only

Handling

Format: Lyophilized

Reconstitution: Distilled water

Concentration: Lot specific

Buffer: Lyophilized from PBS with 2 % sucrose

Handling Advice: Avoid repeat freeze-thaw cycles.

Storage: 4 °C, -20 °C

Storage Comment: Long term: -20°C, the use of 50% glycerol is recommended if storing aliquots in -20°C for long term use (up to 1 year)
Short term (less than 1 week): 4°C. Avoid freeze-thaw cycles.

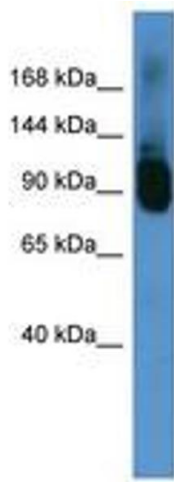


Image 1.