

Datasheet for ABIN6746221  
**anti-ABCA1 antibody (AA 1271-1320)**[Go to Product page](#)

## 1 Image

## Overview

Quantity:	100 µL
Target:	ABCA1
Binding Specificity:	AA 1271-1320
Reactivity:	Mouse, Human, Rat, Dog, Guinea Pig
Host:	Rabbit
Clonality:	Polyclonal
Conjugate:	This ABCA1 antibody is un-conjugated
Application:	Western Blotting (WB)

## Product Details

Immunogen:	Synthetic peptide located between aa1271-1320 of mouse Abca1 (B1AWZ8, NP_038482). Percent identity by BLAST analysis: Human, Gorilla, Gibbon, Mouse (100%), Galago, Marmoset, Bovine, Bat, Rabbit, Horse, Pig, Turkey, Zebra finch, Chicken (92%), Monkey, Rat, Hamster, Elephant, Dog, Guinea pig, Lizard (85%), Platypus (80%).  Type of Immunogen: Synthetic peptide
Specificity:	Mouse ABCA1
Predicted Reactivity:	Percent identity by BLAST analysis: Human (100%) Mouse, Bovine, Rabbit, Horse, Pig, Chicken (92%) Rat, Dog, Guinea pig (85%).
Purification:	Immunoaffinity purified

## Target Details

Target:	ABCA1
Alternative Name:	ABCA1 ( <a href="#">ABCA1 Products</a> )
Background:	Name/Gene ID: ABCA1 Subfamily: ATP-binding cassette - ABCA/ABC1 Family: Transporter  Synonyms: ABCA1, ABC-1, ABC1, CERP, HDLDT1, Tangier disease, ATP-binding cassette 1, Td, Membrane-bound, TGD
Gene ID:	19
NCBI Accession:	<a href="#">NP_038482</a>
UniProt:	<a href="#">O95477</a>
Pathways:	<a href="#">Cellular Response to Molecule of Bacterial Origin</a> , <a href="#">cAMP Metabolic Process</a> , <a href="#">Regulation of Lipid Metabolism by PPARalpha</a> , <a href="#">Lipid Metabolism</a>

## Application Details

Application Notes:	Approved: WB (0.2 - 1 µg/mL)  Usage: Western Blot: Suggested dilution at 1 µg/mL in 5 % skim milk / PBS buffer, and HRP conjugated anti-Rabbit IgG should be diluted in 1: 50,000 - 100,000 as secondary antibody.
Comment:	Target Species of Antibody: Mouse
Restrictions:	For Research Use only

## Handling

Format:	Lyophilized
Reconstitution:	Distilled water
Concentration:	Lot specific
Buffer:	Lyophilized from PBS with 2 % sucrose
Handling Advice:	Avoid repeat freeze-thaw cycles.
Storage:	4 °C,-20 °C
Storage Comment:	Long term: -20°C, the use of 50% glycerol is recommended if storing aliquots in -20°C for long

Handling

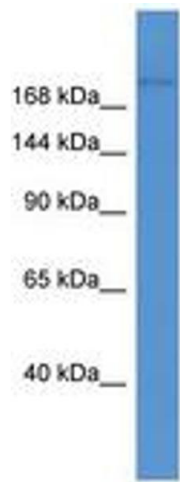
---

term use (up to 1 year)

Short term (less than 1 week): 4°C. Avoid freeze-thaw cycles.

Images

---



**Image 1.**