



[Go to Product page](#)

Datasheet for ABIN6746222

anti-ABCB10 antibody (AA 194-243)

1 Image

Overview

Quantity:	100 µL
Target:	ABCB10
Binding Specificity:	AA 194-243
Reactivity:	Human, Rat, Mouse, Cow, Dog, Guinea Pig, Rabbit, Zebrafish (Danio rerio), Monkey, Pig
Host:	Rabbit
Clonality:	Polyclonal
Conjugate:	This ABCB10 antibody is un-conjugated
Application:	Western Blotting (WB)

Product Details

Immunogen:	Synthetic peptide located between aa194-243 of mouse Abcb10 (Q9JI39, NP_062425). Percent identity by BLAST analysis: Human, Gorilla, Gibbon, Monkey, Marmoset, Mouse, Rat, Elephant, Dog, Bovine, Rabbit, Pig, Opossum, Guinea pig (100%), Horse, Zebra finch, Chicken, Platypus, Lizard (92%), Rice (86%), Stickleback (85%), Zebrafish, Slime mold, Grape, Spikemoss (84%). Type of Immunogen: Synthetic peptide
Specificity:	Mouse ABCB10
Predicted Reactivity:	Percent identity by BLAST analysis: Rat, Dog, Bovine, Rabbit, Pig, Guinea pig (100%) Horse, Chicken (92%) Zebrafish (84%).
Purification:	Immunoaffinity purified

Target Details

Target: ABCB10

Alternative Name: ABCB10 ([ABCB10 Products](#))

Background: Name/Gene ID: ABCB10

Subfamily: ATP-binding cassette - ABCB/MDR

Family: Transporter

Synonyms: ABCB10, ABC-me, ABC transporter 10 protein, M-ABC2, EST20237, MTABC2

Gene ID: 23456

NCBI Accession: [NP_062425](#)

UniProt: [Q9NRK6](#)

Application Details

Application Notes: Approved: WB (0.2 - 1 µg/mL)

Usage: Western Blot: Suggested dilution at 1 µg/mL in 5 % skim milk / PBS buffer, and HRP conjugated anti-Rabbit IgG should be diluted in 1: 50,000 - 100,000 as secondary antibody.

Comment: Target Species of Antibody: Mouse

Restrictions: For Research Use only

Handling

Format: Lyophilized

Reconstitution: Distilled water

Concentration: Lot specific

Buffer: Lyophilized from PBS with 2 % sucrose

Handling Advice: Avoid repeat freeze-thaw cycles.

Storage: 4 °C, -20 °C

Storage Comment: Long term: -20°C, the use of 50% glycerol is recommended if storing aliquots in -20°C for long term use (up to 1 year)

Short term (less than 1 week): 4°C. Avoid freeze-thaw cycles.

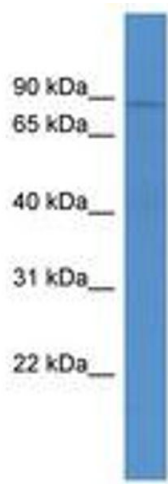


Image 1.