

Datasheet for ABIN6746225  
**anti-SLC26A2 antibody (AA 635-684)**[Go to Product page](#)

## 1 Image

## Overview

Quantity:	100 µL
Target:	SLC26A2
Binding Specificity:	AA 635-684
Reactivity:	Human, Mouse, Rat, Cow, Sheep, Dog, Horse, Monkey, Bat
Host:	Rabbit
Clonality:	Polyclonal
Conjugate:	This SLC26A2 antibody is un-conjugated
Application:	Western Blotting (WB)

## Product Details

Immunogen:	Synthetic peptide located between aa635-684 of mouse Slc26a2 (Q62273, NP_031911). Percent identity by BLAST analysis: Human, Gorilla, Gibbon, Marmoset, Mouse, Rat, Sheep, Panda, Dog, Bovine, Bat, Horse (100%), Guinea pig (92%), Galago, Rabbit (85%), Opossum (84%).  Type of Immunogen: Synthetic peptide
Specificity:	Mouse SLC26A2
Predicted Reactivity:	Percent identity by BLAST analysis: Mouse, Dog, Horse (100%).
Purification:	Immunoaffinity purified

## Target Details

Target:	SLC26A2
---------	---------

## Target Details

Alternative Name:	SLC26A2 ( <a href="#">SLC26A2 Products</a> )
Background:	Name/Gene ID: SLC26A2 Subfamily: Sulfate transporter Family: Transporter  Synonyms: SLC26A2, D5S1708, Diastrophic dysplasia protein, MST153, DTD, DTDST, EDM4, MSTP157, Sulfate anion transporter 1, Sulfate transporter
Gene ID:	1836
NCBI Accession:	<a href="#">NP_031911</a>
UniProt:	<a href="#">P50443</a>
Pathways:	<a href="#">Glycosaminoglycan Metabolic Process</a> , <a href="#">Ribonucleoside Biosynthetic Process</a>

## Application Details

Application Notes:	Approved: WB (1 µg/mL)  Usage: Western Blot: Suggested dilution at 1 µg/mL in 5 % skim milk / PBS buffer, and HRP conjugated anti-Rabbit IgG should be diluted in 1: 50,000 - 100,000 as secondary antibody.
Comment:	Target Species of Antibody: Mouse
Restrictions:	For Research Use only

## Handling

Format:	Lyophilized
Reconstitution:	Distilled water
Concentration:	Lot specific
Buffer:	Lyophilized from PBS with 2 % sucrose
Handling Advice:	Avoid repeat freeze-thaw cycles.
Storage:	4 °C, -20 °C
Storage Comment:	Long term: -20°C, the use of 50% glycerol is recommended if storing aliquots in -20°C for long term use (up to 1 year) Short term (less than 1 week): 4°C. Avoid freeze-thaw cycles.

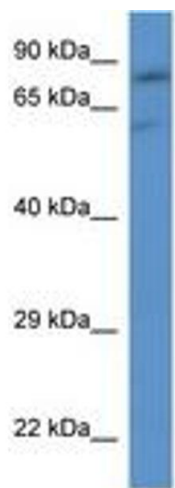


Image 1.