

Datasheet for ABIN6746229

anti-SLC25A27 antibody (AA 224-273)



[Go to Product page](#)

1 Image

Overview

Quantity:	100 µL
Target:	SLC25A27
Binding Specificity:	AA 224-273
Reactivity:	Human, Rat, Mouse, Guinea Pig, Horse, Rabbit, Cow, Zebrafish (Danio rerio), Dog, Monkey, Pig, Bat
Host:	Rabbit
Clonality:	Polyclonal
Conjugate:	This SLC25A27 antibody is un-conjugated
Application:	Western Blotting (WB)

Product Details

Immunogen:	<p>Synthetic peptide located between aa224-273 of mouse Slc25a27 (Q9D6D0, NP_082987). Percent identity by BLAST analysis: Human, Orangutan, Gibbon, Monkey, Marmoset, Mouse, Rat, Elephant, Dog, Bovine, Bat, Rabbit, Horse, Pig, Guinea pig, Zebra finch, Sparrow (100%), Galago, Platypus, Xenopus (92%), Beetle (85%), Zebrafish (84%).</p> <p>Type of Immunogen: Synthetic peptide</p>
Specificity:	Mouse SLC25A27 / UCP4
Predicted Reactivity:	Percent identity by BLAST analysis: Human, Mouse, Rat, Dog, Bovine, Rabbit, Pig (100%) Xenopus (92%) Zebrafish (84%).
Purification:	Immunoaffinity purified

Target Details

Target:	SLC25A27
Alternative Name:	SLC25A27/ UCP4 (SLC25A27 Products)
Background:	Name/Gene ID: SLC25A27 Subfamily: Mitochondrial carrier Family: Transporter Synonyms: SLC25A27, RP11-446F17.2, UCP 4, UCP4, Uncoupling protein 4
Gene ID:	9481
NCBI Accession:	NP_082987
UniProt:	O95847

Application Details

Application Notes:	Approved: WB (1 µg/mL) Usage: Western Blot: Suggested dilution at 1 µg/mL in 5 % skim milk / PBS buffer, and HRP conjugated anti-Rabbit IgG should be diluted in 1: 50,000 - 100,000 as secondary antibody.
Comment:	Target Species of Antibody: Mouse
Restrictions:	For Research Use only

Handling

Format:	Lyophilized
Reconstitution:	Distilled water
Concentration:	Lot specific
Buffer:	Lyophilized from PBS with 2 % sucrose
Handling Advice:	Avoid repeat freeze-thaw cycles.
Storage:	4 °C, -20 °C
Storage Comment:	Long term: -20°C, the use of 50% glycerol is recommended if storing aliquots in -20°C for long term use (up to 1 year) Short term (less than 1 week): 4°C. Avoid freeze-thaw cycles.

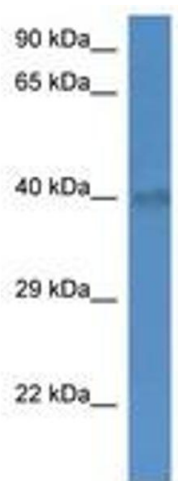


Image 1.