



Datasheet for ABIN6746233
anti-NBC4 antibody (AA 148-197)



[Go to Product page](#)

1 Image

Overview

Quantity:	100 µL
Target:	NBC4
Binding Specificity:	AA 148-197
Reactivity:	Human, Mouse, Rat, Cow, Dog, Guinea Pig, Horse, Rabbit, Pig
Host:	Rabbit
Clonality:	Polyclonal
Conjugate:	This NBC4 antibody is un-conjugated
Application:	Western Blotting (WB)

Product Details

Immunogen:	Synthetic peptide located between aa148-197 of human SLC4A5 (Q9BY07, NP_067019). Percent identity by BLAST analysis: Human, Chimpanzee, Gorilla, Gibbon, Galago, Marmoset, Mouse, Rat, Elephant, Dog, Bovine, Rabbit, Horse, Pig, Opossum, Guinea pig, Turkey, Zebra finch, Stickleback (100%), Monkey, Panda, Bat, Chicken, Platypus, Lizard, Xenopus, Trout, Zebrafish, Drosophila, Mosquito (92%). Type of Immunogen: Synthetic peptide
Specificity:	Human SLC4A5
Predicted Reactivity:	Percent identity by BLAST analysis: Human, Mouse, Dog, Bovine, Rabbit, Horse, Guinea pig, Zebrafish (100%).
Purification:	Immunoaffinity purified

Target Details

Target:	NBC4
Alternative Name:	SLC4A5 / NBC4 (NBC4 Products)
Background:	Name/Gene ID: SLC4A5 Subfamily: Anion exchanger Family: Transporter Synonyms: SLC4A5, NBC4, NBCe2
Gene ID:	57835
NCBI Accession:	NP_067019
UniProt:	Q9BY07

Application Details

Application Notes:	Approved: WB (0.2 - 1 µg/mL) Usage: Western Blot: Suggested dilution at 1 µg/mL in 5 % skim milk / PBS buffer, and HRP conjugated anti-Rabbit IgG should be diluted in 1: 50,000 - 100,000 as secondary antibody.
Comment:	Target Species of Antibody: Human
Restrictions:	For Research Use only

Handling

Format:	Lyophilized
Reconstitution:	Distilled water
Concentration:	Lot specific
Buffer:	Lyophilized from PBS with 2 % sucrose
Handling Advice:	Avoid repeat freeze-thaw cycles.
Storage:	4 °C, -20 °C
Storage Comment:	Long term: -20°C, the use of 50% glycerol is recommended if storing aliquots in -20°C for long term use (up to 1 year) Short term (less than 1 week): 4°C. Avoid freeze-thaw cycles.

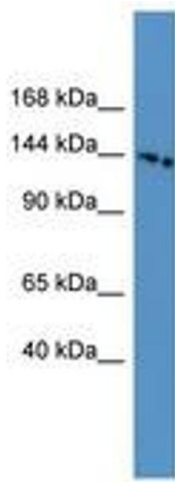


Image 1.