



Datasheet for ABIN6746236
anti-SLC6A15 antibody (AA 400-449)



[Go to Product page](#)

1 Image

Overview

Quantity:	100 µL
Target:	SLC6A15
Binding Specificity:	AA 400-449
Reactivity:	Human, Mouse, Guinea Pig, Rabbit, Pig, Zebrafish (Danio rerio)
Host:	Rabbit
Clonality:	Polyclonal
Conjugate:	This SLC6A15 antibody is un-conjugated
Application:	Western Blotting (WB)

Product Details

Immunogen:	Synthetic peptide located between aa400-449 of mouse Slc6a15 (Q8BG16, NP_780537). Percent identity by BLAST analysis: Human, Gorilla, Orangutan, Gibbon, Mouse (100%), Monkey, Marmoset (92%), Galago, Rat, Hamster, Elephant, Panda, Bovine, Horse, Pig, Zebra finch, Zebrafish (85%). Type of Immunogen: Synthetic peptide
Specificity:	Mouse SLC6A15
Predicted Reactivity:	Percent identity by BLAST analysis: Human (100%) Pig, Zebrafish (85%).
Purification:	Immunoaffinity purified

Target Details

Target:	SLC6A15
Alternative Name:	SLC6A15 / SBAT1 (SLC6A15 Products)
Background:	Name/Gene ID: SLC6A15 Subfamily: Neurotransmitter:sodium symporter Family: Transporter Synonyms: SLC6A15, Orphan transporter v7-3, Transporter v7-3, NTT73, SBAT1, B0AT2, Hv7-3, V7-3
Gene ID:	55117
NCBI Accession:	NP_780537
UniProt:	Q9H2J7

Application Details

Application Notes:	Approved: WB (1 µg/mL) Usage: Western Blot: Suggested dilution at 1 µg/mL in 5 % skim milk / PBS buffer, and HRP conjugated anti-Rabbit IgG should be diluted in 1: 50,000 - 100,000 as secondary antibody.
Comment:	Target Species of Antibody: Mouse
Restrictions:	For Research Use only

Handling

Format:	Lyophilized
Reconstitution:	Distilled water
Concentration:	Lot specific
Buffer:	Lyophilized from PBS with 2 % sucrose
Handling Advice:	Avoid repeat freeze-thaw cycles.
Storage:	4 °C,-20 °C
Storage Comment:	Long term: -20°C, the use of 50% glycerol is recommended if storing aliquots in -20°C for long term use (up to 1 year) Short term (less than 1 week): 4°C. Avoid freeze-thaw cycles.

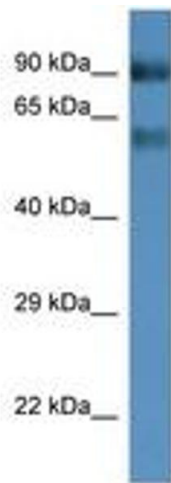


Image 1.