



[Go to Product page](#)

Datasheet for ABIN6746239  
**anti-SGCD antibody (AA 37-86)**

1 Image

Overview

Quantity:	100 µL
Target:	SGCD
Binding Specificity:	AA 37-86
Reactivity:	Human, Mouse, Rat, Cow, Rabbit, Guinea Pig, Pig, Bat, Hamster, Monkey
Host:	Rabbit
Clonality:	Polyclonal
Conjugate:	This SGCD antibody is un-conjugated
Application:	Western Blotting (WB)

Product Details

Immunogen:	Synthetic peptide located between aa37-86 of mouse Sgcd (P82347, NP_036021). Percent identity by BLAST analysis: Human, Chimpanzee, Gorilla, Gibbon, Monkey, Galago, Marmoset, Mouse, Rat, Hamster, Elephant, Bovine, Bat, Rabbit, Pig, Guinea pig, Zebra finch, Stickleback (100%), Dog, Opossum, Chicken, Platypus, Zebrafish (92%), Horse (85%).  Type of Immunogen: Synthetic peptide
Specificity:	Mouse SGCD / Delta-Sarcoglycan
Predicted Reactivity:	Percent identity by BLAST analysis: Human, Mouse, Bovine, Rabbit, Pig (100%) Dog, Chicken, Zebrafish (92%).
Purification:	Immunoaffinity purified

## Target Details

---

Target:	SGCD
Alternative Name:	SGCD / Delta-Sarcoglycan ( <a href="#">SGCD Products</a> )
Background:	Name/Gene ID: SGCD  Synonyms: SGCD, 35DAG, Delta-SG, Placental delta sarcoglycan, LGMD2F, SGCDP, SGD, SG-delta, CMD1L, DAGD, Delta-sarcoglycan
Gene ID:	6444
NCBI Accession:	<a href="#">NP_036021</a>
UniProt:	<a href="#">Q92629</a>
Pathways:	<a href="#">Maintenance of Protein Location</a>

## Application Details

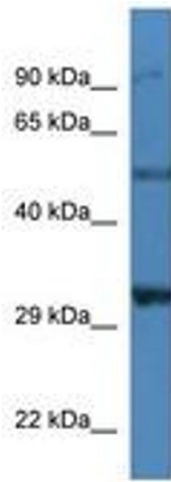
---

Application Notes:	Approved: WB (1 µg/mL)  Usage: Western Blot: Suggested dilution at 1 µg/mL in 5 % skim milk / PBS buffer, and HRP conjugated anti-Rabbit IgG should be diluted in 1: 50,000 - 100,000 as secondary antibody.
Comment:	Target Species of Antibody: Mouse
Restrictions:	For Research Use only

## Handling

---

Format:	Lyophilized
Reconstitution:	Distilled water
Concentration:	Lot specific
Buffer:	Lyophilized from PBS with 2 % sucrose
Handling Advice:	Avoid repeat freeze-thaw cycles.
Storage:	4 °C,-20 °C
Storage Comment:	Long term: -20°C, the use of 50% glycerol is recommended if storing aliquots in -20°C for long term use (up to 1 year)  Short term (less than 1 week): 4°C. Avoid freeze-thaw cycles.



**Image 1.**