



[Go to Product page](#)

Datasheet for ABIN6746254  
**anti-ATP1B2 antibody (AA 60-109)**

1 Image

1 Publication

### Overview

Quantity:	100 µL
Target:	ATP1B2
Binding Specificity:	AA 60-109
Reactivity:	Human, Mouse, Rat, Cow, Dog, Guinea Pig, Horse, Bat, Monkey, Pig
Host:	Rabbit
Clonality:	Polyclonal
Conjugate:	This ATP1B2 antibody is un-conjugated
Application:	Western Blotting (WB)

### Product Details

Immunogen:	Synthetic peptide located between aa60-109 of mouse Atp1b2 (P14231, NP_038201). Percent identity by BLAST analysis: Human, Gorilla, Gibbon, Monkey, Galago, Marmoset, Mouse, Rat, Elephant, Panda, Dog, Bovine, Bat, Horse, Pig, Guinea pig (100%), Rabbit (92%).  Type of Immunogen: Synthetic peptide
Specificity:	Mouse ATP1B2
Predicted Reactivity:	Percent identity by BLAST analysis: Human, Mouse, Rat, Dog, Bovine, Horse, Guinea pig (100%).
Purification:	Immunoaffinity purified

### Target Details

Target:	ATP1B2
---------	--------

## Target Details

---

Alternative Name:	AMOG / ATP1B2 ( <a href="#">ATP1B2 Products</a> )
Background:	Name/Gene ID: ATP1B2 Subfamily: ATPase - P type, beta subunit Family: Transporter  Synonyms: ATP1B2, Adhesion molecule on glia, AMOG
Gene ID:	482
NCBI Accession:	<a href="#">NP_038201</a>
UniProt:	<a href="#">P14415</a>
Pathways:	<a href="#">Thyroid Hormone Synthesis</a>

## Application Details

---

Application Notes:	Approved: WB (0.2 - 1 µg/mL)  Usage: Western Blot: Suggested dilution at 1 µg/mL in 5 % skim milk / PBS buffer, and HRP conjugated anti-Rabbit IgG should be diluted in 1: 50,000 - 100,000 as secondary antibody.
Comment:	Target Species of Antibody: Mouse
Restrictions:	For Research Use only

## Handling

---

Format:	Lyophilized
Reconstitution:	Distilled water
Concentration:	Lot specific
Buffer:	Lyophilized from PBS with 2 % sucrose
Handling Advice:	Avoid repeat freeze-thaw cycles.
Storage:	4 °C, -20 °C
Storage Comment:	Long term: -20°C, the use of 50% glycerol is recommended if storing aliquots in -20°C for long term use (up to 1 year) Short term (less than 1 week): 4°C. Avoid freeze-thaw cycles.

## Publications

---

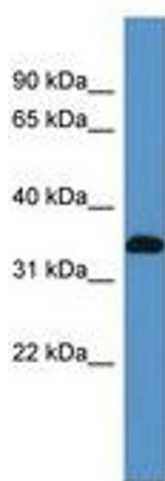
Product cited in: Saitoh, Pizzi, Wang: "Perturbation of SUMOlation enzyme Ubc9 by distinct domain within nucleoporin RanBP2/Nup358." in: **The Journal of biological chemistry**, Vol. 277, Issue 7, pp. 4755-63, (2002) ([PubMed](#)).

Christmann, Kaina: "Nuclear translocation of mismatch repair proteins MSH2 and MSH6 as a response of cells to alkylating agents." in: **The Journal of biological chemistry**, Vol. 275, Issue 46, pp. 36256-62, (2000) ([PubMed](#)).

Palombo, Gallinari, Iaccarino, Lettieri, Hughes, D'Arrigo, Truong, Hsuan, Jirichny: "GTBP, a 160-kilodalton protein essential for mismatch-binding activity in human cells." in: **Science (New York, N.Y.)**, Vol. 268, Issue 5219, pp. 1912-4, (1995) ([PubMed](#)).

## Images

---



**Image 1.**