

Datasheet for ABIN6746285  
**anti-HMX3 antibody (AA 151-200)**[Go to Product page](#)

## 1 Image

## Overview

Quantity:	100 µL
Target:	HMX3
Binding Specificity:	AA 151-200
Reactivity:	Human, Mouse, Monkey
Host:	Rabbit
Clonality:	Polyclonal
Conjugate:	This HMX3 antibody is un-conjugated
Application:	Western Blotting (WB)

## Product Details

Immunogen:	Synthetic peptide located between aa151-200 of mouse Hmx3 (B9EIJ0, NP_032283). Percent identity by BLAST analysis: Human, Gorilla, Monkey, Marmoset, Mouse (100%), Rat, Dog, Horse, Pig, Guinea pig (92%), Bovine (90%), Galago, Turkey, Chicken (85%), Lizard (84%).  Type of Immunogen: Synthetic peptide
Specificity:	Mouse HMX3
Predicted Reactivity:	Percent identity by BLAST analysis: Human (100%) Mouse, Rat, Dog, Pig, Guinea pig (92%) Bovine (90%) Chicken (85%).
Purification:	Immunoaffinity purified

## Target Details

Target:	HMX3
Alternative Name:	HMX3 ( <a href="#">HMX3 Products</a> )
Background:	Name/Gene ID: HMX3  Synonyms: HMX3, Homeobox protein HMX3, Homeobox protein Nkx-5.1, H6 family homeobox 3, Homeobox (H6 family) 3, NKX5.1, NKX-5.1, Nkx5-1, Homeo box (H6 family) 3
Gene ID:	340784
NCBI Accession:	<a href="#">NP_032283</a>
UniProt:	<a href="#">A6NHT5</a>

## Application Details

Application Notes:	Approved: WB (0.2 - 1 µg/mL)  Usage: Western Blot: Suggested dilution at 1 µg/mL in 5 % skim milk / PBS buffer, and HRP conjugated anti-Rabbit IgG should be diluted in 1: 50,000 - 100,000 as secondary antibody.
Comment:	Target Species of Antibody: Mouse
Restrictions:	For Research Use only

## Handling

Format:	Lyophilized
Reconstitution:	Distilled water
Concentration:	Lot specific
Buffer:	Lyophilized from PBS with 2 % sucrose
Handling Advice:	Avoid repeat freeze-thaw cycles.
Storage:	4 °C, -20 °C
Storage Comment:	Long term: -20°C, the use of 50% glycerol is recommended if storing aliquots in -20°C for long term use (up to 1 year)  Short term (less than 1 week): 4°C. Avoid freeze-thaw cycles.

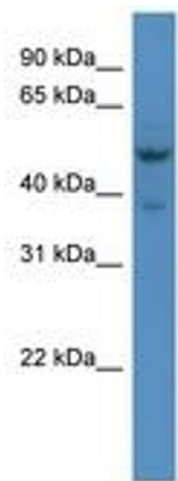


Image 1.