

Datasheet for ABIN6746286  
**anti-THG1L antibody (AA 60-109)**[Go to Product page](#)

## 1 Image

## Overview

Quantity:	100 µL
Target:	THG1L
Binding Specificity:	AA 60-109
Reactivity:	Human, Mouse, Rat, Rabbit, Dog, Horse, Monkey
Host:	Rabbit
Clonality:	Polyclonal
Conjugate:	This THG1L antibody is un-conjugated
Application:	Western Blotting (WB)

## Product Details

Immunogen:	Synthetic peptide located between aa60-109 of mouse Thg1l (Q9CY52, NP_001074438). Percent identity by BLAST analysis: Human, Gorilla, Gibbon, Monkey, Marmoset, Mouse, Rat, Panda, Dog, Rabbit, Horse (100%), Galago, Elephant, Pig, Opossum, Guinea pig (92%), Bovine (85%), Bat (84%).  Type of Immunogen: Synthetic peptide
Specificity:	Mouse THG1L
Predicted Reactivity:	Percent identity by BLAST analysis: Human, Dog (100%) Mouse, Pig, Guinea pig (92%).
Purification:	Immunoaffinity purified

## Target Details

Target:	THG1L
Alternative Name:	THG1L ( <a href="#">THG1L Products</a> )
Background:	Name/Gene ID: THG1L  Synonyms: THG1L, IHG-1, ICF45, Induced by high glucose-1
Gene ID:	54974
NCBI Accession:	<a href="#">NP_001074438</a>
UniProt:	<a href="#">Q9NWX6</a>

## Application Details

Application Notes:	Approved: WB (1 µg/mL)  Usage: Western Blot: Suggested dilution at 1 µg/mL in 5 % skim milk / PBS buffer, and HRP conjugated anti-Rabbit IgG should be diluted in 1: 50,000 - 100,000 as secondary antibody.
Comment:	Target Species of Antibody: Mouse
Restrictions:	For Research Use only

## Handling

Format:	Lyophilized
Reconstitution:	Distilled water
Concentration:	Lot specific
Buffer:	Lyophilized from PBS with 2 % sucrose
Handling Advice:	Avoid repeat freeze-thaw cycles.
Storage:	4 °C, -20 °C
Storage Comment:	Long term: -20°C, the use of 50% glycerol is recommended if storing aliquots in -20°C for long term use (up to 1 year)  Short term (less than 1 week): 4°C. Avoid freeze-thaw cycles.

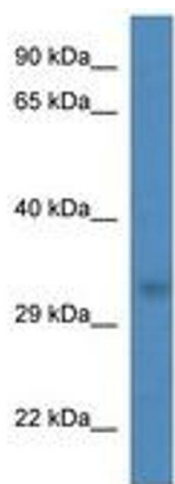


Image 1.