



[Go to Product page](#)

Datasheet for ABIN6746295

anti-METTL4 antibody (AA 361-410)

1 Image

Overview

Quantity:	100 µL
Target:	METTL4
Binding Specificity:	AA 361-410
Reactivity:	Human, Mouse, Rat, Horse, Cow, Rabbit, Dog, Guinea Pig, Monkey, Bat, Hamster
Host:	Rabbit
Clonality:	Polyclonal
Conjugate:	This METTL4 antibody is un-conjugated
Application:	Western Blotting (WB)

Product Details

Immunogen:	Synthetic peptide located between aa361-410 of human Mettl4 (D3ZD59, NP_001178743). Percent identity by BLAST analysis: Human, Gorilla, Gibbon, Monkey, Marmoset, Mouse, Rat, Hamster, Panda, Dog, Bovine, Bat, Rabbit, Horse, Opossum, Guinea pig, Platypus (100%), Elephant, Pig, Stickleback, Zebrafish (92%), Lizard, Seabass (85%), Zebra finch (84%). Type of Immunogen: Synthetic peptide
Specificity:	Rat METTL4
Predicted Reactivity:	Percent identity by BLAST analysis: Mouse, Dog, Bovine, Rabbit, Horse (100%) Rat, Pig (92%).
Purification:	Immunoaffinity purified

Target Details

Target: METTL4

Alternative Name: METTL4 ([METTL4 Products](#))

Background: Name/Gene ID: METTL4

Synonyms: METTL4, Methyltransferase like 4, HsT661

Gene ID: 64863

NCBI Accession: [NP_001178743](#)

UniProt: [Q8N3J2](#)

Application Details

Application Notes: Approved: WB (0.2 - 1 µg/mL)

Usage: Western Blot: Suggested dilution at 1 µg/mL in 5 % skim milk / PBS buffer, and HRP conjugated anti-Rabbit IgG should be diluted in 1: 50,000 - 100,000 as secondary antibody.

Comment: Target Species of Antibody: Human

Restrictions: For Research Use only

Handling

Format: Lyophilized

Reconstitution: Distilled water

Concentration: Lot specific

Buffer: Lyophilized from PBS with 2 % sucrose

Handling Advice: Avoid repeat freeze-thaw cycles.

Storage: 4 °C, -20 °C

Storage Comment: Long term: -20°C, the use of 50% glycerol is recommended if storing aliquots in -20°C for long term use (up to 1 year)

Short term (less than 1 week): 4°C. Avoid freeze-thaw cycles.

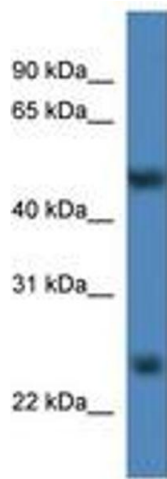


Image 1.