



[Go to Product page](#)

Datasheet for ABIN6746299  
**anti-PIGW antibody (AA 221-270)**

1 Image

Overview

Quantity:	100 µL
Target:	PIGW
Binding Specificity:	AA 221-270
Reactivity:	Human, Rat, Mouse, Cow, Dog, Bat, Hamster, Monkey
Host:	Rabbit
Clonality:	Polyclonal
Conjugate:	This PIGW antibody is un-conjugated
Application:	Western Blotting (WB)

Product Details

Immunogen:	Synthetic peptide located between aa221-270 of rat Pigw (Q7TSN4, NP_919443). Percent identity by BLAST analysis: Human, Gorilla, Gibbon, Monkey, Marmoset, Rat, Hamster, Panda, Dog, Bat (100%), Elephant, Horse, Guinea pig (92%), Galago, Mouse, Bovine (85%).  Type of Immunogen: Synthetic peptide
Specificity:	Rat PIGW
Predicted Reactivity:	Percent identity by BLAST analysis: Human (100%) Rat (92%) Mouse, Bovine (85%).
Purification:	Immunoaffinity purified

Target Details

Target:	PIGW
---------	------

## Target Details

---

Alternative Name: [PIGW \(PIGW Products\)](#)

Background: Name/Gene ID: PIGW

Synonyms: PIGW, Gwt1, PIG-W

Gene ID: 284098

NCBI Accession: [NP\\_919443](#)

UniProt: [Q7Z7B1](#)

Pathways: [Inositol Metabolic Process](#)

## Application Details

---

Application Notes: Approved: WB (0.2 - 1 µg/mL)

Usage: Western Blot: Suggested dilution at 1 µg/mL in 5 % skim milk / PBS buffer, and HRP conjugated anti-Rabbit IgG should be diluted in 1: 50,000 - 100,000 as secondary antibody.

Comment: Target Species of Antibody: Rat

Restrictions: For Research Use only

## Handling

---

Format: Lyophilized

Reconstitution: Distilled water

Concentration: Lot specific

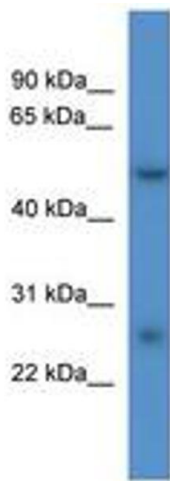
Buffer: Lyophilized from PBS with 2 % sucrose

Handling Advice: Avoid repeat freeze-thaw cycles.

Storage: 4 °C, -20 °C

Storage Comment: Long term: -20°C, the use of 50% glycerol is recommended if storing aliquots in -20°C for long term use (up to 1 year)

Short term (less than 1 week): 4°C. Avoid freeze-thaw cycles.



**Image 1.**