



[Go to Product page](#)

Datasheet for ABIN6746302
anti-gGT2 antibody (AA 51-100)

1 Image

Overview

Quantity:	100 µL
Target:	gGT2
Binding Specificity:	AA 51-100
Reactivity:	Human, Pig
Host:	Rabbit
Clonality:	Polyclonal
Conjugate:	This gGT2 antibody is un-conjugated
Application:	Western Blotting (WB)

Product Details

Immunogen:	Synthetic peptide located between aa51-100 of human GGT2. Percent identity by BLAST analysis: Human, Pig (100%), Gorilla (92%), Monkey, Marmoset, Panda, Dog, Bovine, Guinea pig, Salmon (85%). Type of Immunogen: Synthetic peptide
Specificity:	Human GGT2
Predicted Reactivity:	Percent identity by BLAST analysis: Human (100%).
Purification:	Immunoaffinity purified

Target Details

Target:	gGT2
---------	------

Target Details

Alternative Name: [GGT2 \(gGT2 Products\)](#)

Background: Name/Gene ID: GGT2

Synonyms: GGT2, Gamma-glutamyltranspeptidase 2, GGT, GGT 2, Gamma-glutamyltransferase 2, Glutathione hydrolase 2

Gene ID: 728441

UniProt: [P36268](#)

Application Details

Application Notes: Approved: WB (0.2 - 1 µg/mL)

Usage: Western Blot: Suggested dilution at 1 µg/mL in 5 % skim milk / PBS buffer, and HRP conjugated anti-Rabbit IgG should be diluted in 1: 50,000 - 100,000 as secondary antibody.

Comment: Target Species of Antibody: Human

Restrictions: For Research Use only

Handling

Format: Lyophilized

Reconstitution: Distilled water

Concentration: Lot specific

Buffer: Lyophilized from PBS with 2 % sucrose

Handling Advice: Avoid repeat freeze-thaw cycles.

Storage: 4 °C, -20 °C

Storage Comment: Long term: -20°C, the use of 50% glycerol is recommended if storing aliquots in -20°C for long term use (up to 1 year)

Short term (less than 1 week): 4°C. Avoid freeze-thaw cycles.

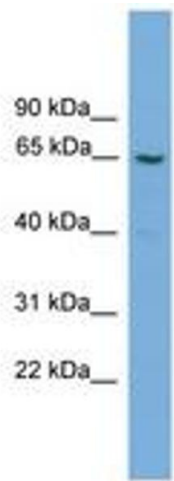


Image 1.