



[Go to Product page](#)

Datasheet for ABIN6746310
anti-CYP2R1 antibody (AA 179-228)

1 Image

Overview

Quantity:	100 µL
Target:	CYP2R1
Binding Specificity:	AA 179-228
Reactivity:	Human, Mouse, Rat, Monkey, Pig, Dog, Horse, Zebrafish (Danio rerio), Bat
Host:	Rabbit
Clonality:	Polyclonal
Conjugate:	This CYP2R1 antibody is un-conjugated
Application:	Western Blotting (WB)

Product Details

Immunogen:	Synthetic peptide located between aa179-228 of human CYP2R1 (Q6VVX0, NP_078790). Percent identity by BLAST analysis: Human, Chimpanzee, Gorilla, Gibbon, Monkey, Marmoset, Mouse, Rat, Elephant, Dog, Bat, Horse, Pig (100%), Galago, Rabbit, Guinea pig, Turkey, Zebra finch, Chicken, Lizard (92%), Opossum (85%). Type of Immunogen: Synthetic peptide
Specificity:	Human CYP2R1
Predicted Reactivity:	Percent identity by BLAST analysis: Human, Mouse, Rat, Dog, Pig (100%) Rabbit, Chicken (92%).
Purification:	Immunoaffinity purified

Target Details

Target:	CYP2R1
Alternative Name:	Cytochrome P450 2R1 / CYP2R1 (CYP2R1 Products)
Background:	Name/Gene ID: CYP2R1 Synonyms: CYP2R1, Cytochrome P450 2R1, Cytochrome P450, family 2, R1, Vitamin D 25-hydroxylase
Gene ID:	120227
NCBI Accession:	NP_078790
UniProt:	Q6VXX0
Pathways:	Metabolism of Steroid Hormones and Vitamin D

Application Details

Application Notes:	Approved: WB (0.2 - 1 µg/mL) Usage: Western Blot: Suggested dilution at 1 µg/mL in 5 % skim milk / PBS buffer, and HRP conjugated anti-Rabbit IgG should be diluted in 1: 50,000 - 100,000 as secondary antibody.
Comment:	Target Species of Antibody: Human
Restrictions:	For Research Use only

Handling

Format:	Lyophilized
Reconstitution:	Distilled water
Concentration:	Lot specific
Buffer:	Lyophilized from PBS with 2 % sucrose
Handling Advice:	Avoid repeat freeze-thaw cycles.
Storage:	4 °C,-20 °C
Storage Comment:	Long term: -20°C, the use of 50% glycerol is recommended if storing aliquots in -20°C for long term use (up to 1 year) Short term (less than 1 week): 4°C. Avoid freeze-thaw cycles.

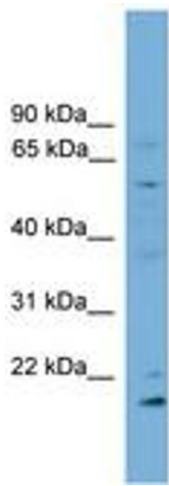


Image 1.