

Datasheet for ABIN6746320
anti-SDPR antibody (AA 80-129)[Go to Product page](#)

1 Image

Overview

Quantity:	100 µL
Target:	SDPR
Binding Specificity:	AA 80-129
Reactivity:	Human, Mouse, Rat, Cow, Goat, Guinea Pig, Hamster, Horse, Pig, Rabbit, Bat, Monkey
Host:	Rabbit
Clonality:	Polyclonal
Conjugate:	This SDPR antibody is un-conjugated
Application:	Western Blotting (WB)

Product Details

Immunogen:	Synthetic peptide located between aa80-129 of mouse Sdpr (Q63918, NP_620080). Percent identity by BLAST analysis: Human, Gorilla, Gibbon, Monkey, Galago, Marmoset, Mouse, Rat, Hamster, Panda, Bovine, Bat, Rabbit, Horse, Pig (100%), Elephant, Opossum (92%), Goat, Guinea pig (85%). Type of Immunogen: Synthetic peptide
Specificity:	Mouse SDPR
Predicted Reactivity:	Percent identity by BLAST analysis: Human, Mouse, Rat, Bovine, Rabbit, Horse, Pig (100%) Goat, Guinea pig (85%).
Purification:	Immunoaffinity purified

Target Details

Target:	SDPR
Alternative Name:	SDR / SDPR (SDPR Products)
Background:	Name/Gene ID: SDPR Synonyms: SDPR, Cavin-2, CAVIN2, PS-p68, SDR, Serum deprivation response
Gene ID:	8436
NCBI Accession:	NP_620080
UniProt:	O95810

Application Details

Application Notes:	Approved: WB (1 µg/mL) Usage: Western Blot: Suggested dilution at 1 µg/mL in 5 % skim milk / PBS buffer, and HRP conjugated anti-Rabbit IgG should be diluted in 1: 50,000 - 100,000 as secondary antibody.
Comment:	Target Species of Antibody: Mouse
Restrictions:	For Research Use only

Handling

Format:	Lyophilized
Reconstitution:	Distilled water
Concentration:	Lot specific
Buffer:	Lyophilized from PBS with 2 % sucrose
Handling Advice:	Avoid repeat freeze-thaw cycles.
Storage:	4 °C, -20 °C
Storage Comment:	Long term: -20°C, the use of 50% glycerol is recommended if storing aliquots in -20°C for long term use (up to 1 year) Short term (less than 1 week): 4°C. Avoid freeze-thaw cycles.

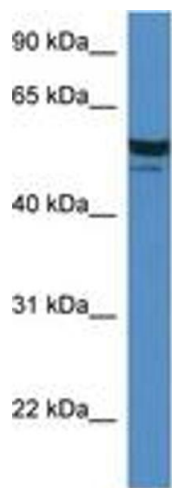


Image 1.