



[Go to Product page](#)

Datasheet for ABIN6746324

anti-Myocardin antibody (AA 237-286)

1 Image

Overview

Quantity:	100 µL
Target:	Myocardin (MYOCD)
Binding Specificity:	AA 237-286
Reactivity:	Human, Rat, Mouse, Cow, Dog, Guinea Pig, Horse, Rabbit, Bat, Monkey
Host:	Rabbit
Clonality:	Polyclonal
Conjugate:	This Myocardin antibody is un-conjugated
Application:	Western Blotting (WB)

Product Details

Immunogen:	Synthetic peptide located between aa237-286 of mouse Capn15 (Q6W8X1, NP_660118). Percent identity by BLAST analysis: Human, Chimpanzee, Gorilla, Monkey, Galago, Marmoset, Mouse, Rat, Elephant, Dog, Bovine, Bat, Rabbit, Horse, Guinea pig (100%), Gibbon, Pig, Opossum (92%), Turkey, Zebra finch, Chicken (86%), Stickleback (84%), Lizard, Xenopus (80%). Type of Immunogen: Synthetic peptide
Specificity:	Mouse MYOCD / Myocardin
Predicted Reactivity:	Percent identity by BLAST analysis: Mouse, Rat, Dog, Bovine, Horse, Guinea pig (100%) Pig (92%) Chicken (86%).
Purification:	Immunoaffinity purified

Target Details

Target:	Myocardin (MYOCD)
Alternative Name:	MYOCD / Myocardin (MYOCD Products)
Background:	Name/Gene ID: MYOCD Synonyms: MYOCD, MYCD, Myocardin
Gene ID:	93649
NCBI Accession:	NP_660118
UniProt:	Q8IZQ8
Pathways:	Regulation of Muscle Cell Differentiation, Skeletal Muscle Fiber Development

Application Details

Application Notes:	Approved: WB (1 µg/mL) Usage: Western Blot: Suggested dilution at 1 µg/mL in 5 % skim milk / PBS buffer, and HRP conjugated anti-Rabbit IgG should be diluted in 1: 50,000 - 100,000 as secondary antibody.
Comment:	Target Species of Antibody: Mouse
Restrictions:	For Research Use only

Handling

Format:	Lyophilized
Reconstitution:	Distilled water
Concentration:	Lot specific
Buffer:	Lyophilized from PBS with 2 % sucrose
Handling Advice:	Avoid repeat freeze-thaw cycles.
Storage:	4 °C, -20 °C
Storage Comment:	Long term: -20°C, the use of 50% glycerol is recommended if storing aliquots in -20°C for long term use (up to 1 year) Short term (less than 1 week): 4°C. Avoid freeze-thaw cycles.

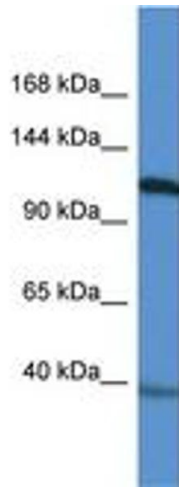


Image 1.