

Datasheet for ABIN6746325
anti-REG3A antibody (AA 43-92)



[Go to Product page](#)

1 Image

Overview

Quantity:	100 µL
Target:	REG3A
Binding Specificity:	AA 43-92
Reactivity:	Human, Monkey
Host:	Rabbit
Clonality:	Polyclonal
Conjugate:	This REG3A antibody is un-conjugated
Application:	Western Blotting (WB)

Product Details

Immunogen:	Synthetic peptide located between aa43-92 of human REG3A (Q06141, NP_002571). Percent identity by BLAST analysis: Human, Chimpanzee, Gorilla, Gibbon, Monkey, Marmoset (100%), Mouse, Rat, Hamster, Dog, Bovine, Pig, Guinea pig (92%), Sheep, Elephant, Horse (85%). Type of Immunogen: Synthetic peptide
Specificity:	Human REG3A
Predicted Reactivity:	Percent identity by BLAST analysis: Human (100%) Dog, Bovine (92%) Mouse, Rat (85%).
Purification:	Immunoaffinity purified

Target Details

Target:	REG3A
---------	-------

Target Details

Alternative Name: REG3A ([REG3A Products](#))

Background: Name/Gene ID: REG3A

Synonyms: REG3A, INGAP, HIP, PAP homologous protein, PAP1, REG-III, REG3, PAP-H, Reg III-alpha, REG-3-alpha, Human proislet peptide, PBCGF

Gene ID: 5068

NCBI Accession: [NP_002571](#)

UniProt: [Q06141](#)

Application Details

Application Notes: Approved: WB (0.2 - 1 µg/mL)

Usage: Western Blot: Suggested dilution at 1 µg/mL in 5 % skim milk / PBS buffer, and HRP conjugated anti-Rabbit IgG should be diluted in 1: 50,000 - 100,000 as secondary antibody.

Comment: Target Species of Antibody: Human

Restrictions: For Research Use only

Handling

Format: Lyophilized

Reconstitution: Distilled water

Concentration: Lot specific

Buffer: Lyophilized from PBS with 2 % sucrose

Handling Advice: Avoid repeat freeze-thaw cycles.

Storage: 4 °C, -20 °C

Storage Comment: Long term: -20°C, the use of 50% glycerol is recommended if storing aliquots in -20°C for long term use (up to 1 year)

Short term (less than 1 week): 4°C. Avoid freeze-thaw cycles.

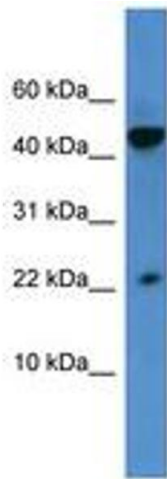


Image 1.