

Datasheet for ABIN6746331
anti-GM527 antibody (AA 218-267)[Go to Product page](#)

1 Image

Overview

Quantity:	100 µL
Target:	GM527
Binding Specificity:	AA 218-267
Reactivity:	Human, Mouse, Rat, Cow, Dog, Guinea Pig, Horse, Bat, Hamster, Monkey
Host:	Rabbit
Clonality:	Polyclonal
Conjugate:	This GM527 antibody is un-conjugated
Application:	Western Blotting (WB)

Product Details

Immunogen:	Synthetic peptide located between aa218-267 of mouse Gm527 (Q4KL13, NP_001020776). Percent identity by BLAST analysis: Human, Gorilla, Gibbon, Monkey, Galago, Marmoset, Mouse, Rat, Hamster, Elephant, Panda, Dog, Bovine, Bat, Horse, Opossum, Guinea pig, Platypus, Stickleback (100%), Rabbit, Xenopus (92%). Type of Immunogen: Synthetic peptide
Specificity:	Mouse C14orf28
Predicted Reactivity:	Percent identity by BLAST analysis:
Purification:	Immunoaffinity purified

Target Details

Target:	GM527
Alternative Name:	DRIP1 / C14orf28 (GM527 Products)
Background:	Name/Gene ID: C14orf28 Synonyms: C14orf28, C14_5270, DRIP-1, DRIP1
Gene ID:	122525
NCBI Accession:	NP_001020776

Application Details

Application Notes:	Approved: WB (1 µg/mL) Usage: Western Blot: Suggested dilution at 1 µg/mL in 5 % skim milk / PBS buffer, and HRP conjugated anti-Rabbit IgG should be diluted in 1: 50,000 - 100,000 as secondary antibody.
Comment:	Target Species of Antibody: Mouse
Restrictions:	For Research Use only

Handling

Format:	Lyophilized
Reconstitution:	Distilled water
Concentration:	Lot specific
Buffer:	Lyophilized from PBS with 2 % sucrose
Handling Advice:	Avoid repeat freeze-thaw cycles.
Storage:	4 °C,-20 °C
Storage Comment:	Long term: -20°C, the use of 50% glycerol is recommended if storing aliquots in -20°C for long term use (up to 1 year) Short term (less than 1 week): 4°C. Avoid freeze-thaw cycles.

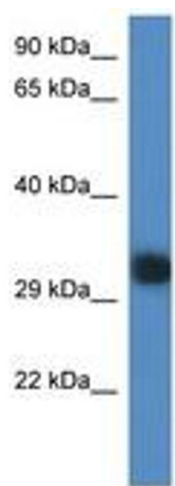


Image 1.