



[Go to Product page](#)

Datasheet for ABIN6746332
anti-TBCB antibody (AA 37-86)

1 Image

Overview

Quantity:	100 µL
Target:	TBCB
Binding Specificity:	AA 37-86
Reactivity:	Human, Mouse, Cow, Dog, Rabbit, Monkey
Host:	Rabbit
Clonality:	Polyclonal
Conjugate:	This TBCB antibody is un-conjugated
Application:	Western Blotting (WB)

Product Details

Immunogen:	Synthetic peptide located between aa37-86 of mouse Tbcx (Q9D1E6, NP_079824). Percent identity by BLAST analysis: Human, Gorilla, Monkey, Marmoset, Mouse, Elephant, Dog, Rabbit (100%), Galago, Rat, Horse, Pig, Guinea pig (92%), Bat (85%). Type of Immunogen: Synthetic peptide
Specificity:	Mouse TBCB / CKAP1
Predicted Reactivity:	Percent identity by BLAST analysis: Human, Mouse, Dog (100%) Rat, Horse, Pig (92%).
Purification:	Immunoaffinity purified

Target Details

Target:	TBCB
---------	------

Target Details

Alternative Name:	TBCB / CKAP1 (TBCB Products)
Background:	Name/Gene ID: TBCB Synonyms: TBCB, CKAP1, CKAPI, Tubulin folding cofactor B, Tubulin-folding cofactor B, CG22, Tubulin-specific chaperone B
Gene ID:	1155
NCBI Accession:	NP_079824
UniProt:	Q99426

Application Details

Application Notes:	Approved: WB (1 µg/mL) Usage: Western Blot: Suggested dilution at 1 µg/mL in 5 % skim milk / PBS buffer, and HRP conjugated anti-Rabbit IgG should be diluted in 1: 50,000 - 100,000 as secondary antibody.
Comment:	Target Species of Antibody: Mouse
Restrictions:	For Research Use only

Handling

Format:	Lyophilized
Reconstitution:	Distilled water
Concentration:	Lot specific
Buffer:	Lyophilized from PBS with 2 % sucrose
Handling Advice:	Avoid repeat freeze-thaw cycles.
Storage:	4 °C, -20 °C
Storage Comment:	Long term: -20°C, the use of 50% glycerol is recommended if storing aliquots in -20°C for long term use (up to 1 year) Short term (less than 1 week): 4°C. Avoid freeze-thaw cycles.

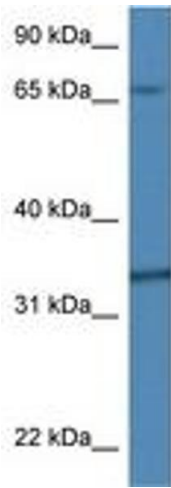


Image 1.