

Datasheet for ABIN6746338  
**anti-CLK1 antibody (AA 35-84)**



[Go to Product page](#)

1 Image

Overview

Quantity:	100 µL
Target:	CLK1
Binding Specificity:	AA 35-84
Reactivity:	Human, Mouse, Monkey, Horse, Rabbit, Rat, Cow, Dog, Guinea Pig, Pig
Host:	Rabbit
Clonality:	Polyclonal
Conjugate:	This CLK1 antibody is un-conjugated
Application:	Western Blotting (WB)

Product Details

Immunogen:	Synthetic peptide located between aa35-84 of human CLK1 (P49759, NP_004062). Percent identity by BLAST analysis: Human, Gorilla, Orangutan, Gibbon, Monkey, Marmoset, Elephant, Dog, Bovine, Rabbit, Horse, Pig, Guinea pig (100%), Galago (92%), Mouse, Platypus (85%), Rat (84%).  Type of Immunogen: Synthetic peptide
Specificity:	Human CLK1
Predicted Reactivity:	Percent identity by BLAST analysis: Human, Dog, Bovine, Horse, Pig, Guinea pig (100%) Mouse (85%) Rat (84%).
Purification:	Immunoaffinity purified

## Target Details

---

Target:	CLK1
Alternative Name:	CLK1 / CLK ( <a href="#">CLK1 Products</a> )
Background:	Name/Gene ID: CLK1 Subfamily: LAMMER/Clk Family: Protein Kinase  Synonyms: CLK1, CDC-like kinase 1, CDC28/CDC2-like kinase, CLK, Protein kinase clk1, Protein tyrosine kinase STY, STY, Protein Kinase CLK
Gene ID:	1195
NCBI Accession:	<a href="#">NP_004062</a>
UniProt:	<a href="#">P49759</a>

## Application Details

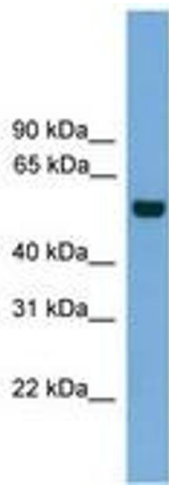
---

Application Notes:	Approved: WB (0.2 - 1 µg/mL)  Usage: Western Blot: Suggested dilution at 1 µg/mL in 5 % skim milk / PBS buffer, and HRP conjugated anti-Rabbit IgG should be diluted in 1: 50,000 - 100,000 as secondary antibody.
Comment:	Target Species of Antibody: Human
Restrictions:	For Research Use only

## Handling

---

Format:	Lyophilized
Reconstitution:	Distilled water
Concentration:	Lot specific
Buffer:	Lyophilized from PBS with 2 % sucrose
Handling Advice:	Avoid repeat freeze-thaw cycles.
Storage:	4 °C, -20 °C
Storage Comment:	Long term: -20°C, the use of 50% glycerol is recommended if storing aliquots in -20°C for long term use (up to 1 year) Short term (less than 1 week): 4°C. Avoid freeze-thaw cycles.



**Image 1.**