



[Go to Product page](#)

Datasheet for ABIN6746339
anti-PLK3 antibody (AA 385-434)

1 Image

Overview

Quantity:	100 µL
Target:	PLK3
Binding Specificity:	AA 385-434
Reactivity:	Human, Mouse, Rat, Cow, Dog, Horse, Pig, Bat, Monkey
Host:	Rabbit
Clonality:	Polyclonal
Conjugate:	This PLK3 antibody is un-conjugated
Application:	Western Blotting (WB)

Product Details

Immunogen:	Synthetic peptide located between aa385-434 of mouse Plk3 (NP_038835). Percent identity by BLAST analysis: Human, Gorilla, Gibbon, Monkey, Galago, Mouse, Rat, Elephant, Panda, Dog, Bovine, Bat, Horse, Pig (100%), Rabbit, Guinea pig (92%). Type of Immunogen: Synthetic peptide
Specificity:	Mouse PLK3
Predicted Reactivity:	Percent identity by BLAST analysis: Human, Mouse, Rat, Dog, Bovine, Horse, Pig (100%) Rabbit (92%).
Purification:	Immunoaffinity purified

Target Details

Target:	PLK3
Alternative Name:	PRK / PLK3 (PLK3 Products)
Background:	Name/Gene ID: PLK3 Subfamily: Polo Family: Protein Kinase Synonyms: PLK3, CNK, FNK, Polo-like kinase 3, PRK, Proliferation-related kinase, Cytokine-inducible kinase, FGF-inducible kinase, PLK-3
Gene ID:	1263
NCBI Accession:	NP_038835
UniProt:	Q9H4B4
Pathways:	Regulation of long-term Neuronal Synaptic Plasticity

Application Details

Application Notes:	Approved: WB (1 µg/mL) Usage: Western Blot: Suggested dilution at 1 µg/mL in 5 % skim milk / PBS buffer, and HRP conjugated anti-Rabbit IgG should be diluted in 1: 50,000 - 100,000 as secondary antibody.
Comment:	Target Species of Antibody: Mouse
Restrictions:	For Research Use only

Handling

Format:	Lyophilized
Reconstitution:	Distilled water
Concentration:	Lot specific
Buffer:	Lyophilized from PBS with 2 % sucrose
Handling Advice:	Avoid repeat freeze-thaw cycles.
Storage:	4 °C, -20 °C
Storage Comment:	Long term: -20°C, the use of 50% glycerol is recommended if storing aliquots in -20°C for long term use (up to 1 year)

Handling

Short term (less than 1 week): 4°C. Avoid freeze-thaw cycles.

Images

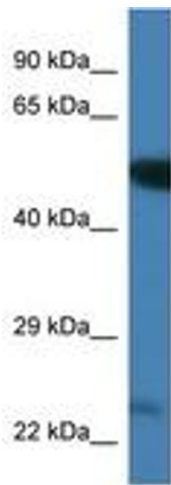


Image 1.