



[Go to Product page](#)

Datasheet for ABIN6746342  
**anti-DCAF7 antibody (N-Term)**

1 Image

### Overview

Quantity:	100 µL
Target:	DCAF7
Binding Specificity:	N-Term
Reactivity:	Human, Mouse, Rat, Guinea Pig, Zebrafish (Danio rerio), Horse, Cow, Dog, Rabbit, Pig, Drosophila melanogaster, Xenopus laevis, Hamster, Bat, Monkey, Chicken
Host:	Rabbit
Clonality:	Polyclonal
Conjugate:	This DCAF7 antibody is un-conjugated
Application:	Western Blotting (WB)

### Product Details

Immunogen:	Synthetic peptide from N-Terminus of mouse Dcaf7 (P61963, NP_082222). Percent identity by BLAST analysis: Human, Chimpanzee, Gorilla, Gibbon, Galago, Marmoset, Mouse, Rat, Hamster, Elephant, Dog, Bovine, Bat, Rabbit, Horse, Pig, Opossum, Guinea pig, Zebra finch, Chicken, Lizard, Xenopus, Salmon, Smelt, Zebrafish, Sea squirt, Drosophila (100%), Beetle (90%).  Type of Immunogen: Synthetic peptide
Specificity:	Mouse DCAF7 / WDR68
Predicted Reactivity:	Percent identity by BLAST analysis: Human, Mouse, Rat, Bovine, Horse, Pig, Guinea pig, Chicken, Zebrafish (100%).
Purification:	Immunoaffinity purified

## Target Details

---

Target:	DCAF7
Alternative Name:	DCAF7 / WDR68 ( <a href="#">DCAF7 Products</a> )
Background:	Name/Gene ID: DCAF7  Synonyms: DCAF7, Human anthocyanin, AN11, WD-repeat protein, WD repeat domain 68, HAN11, SWAN-1, WDR68
Gene ID:	10238
NCBI Accession:	<a href="#">NP_082222</a>
UniProt:	<a href="#">P61962</a>
Pathways:	<a href="#">SARS-CoV-2 Protein Interactome</a>

## Application Details

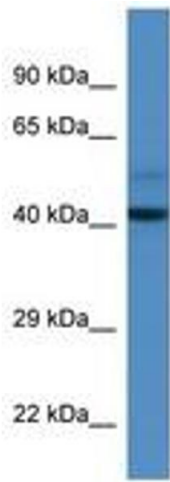
---

Application Notes:	Approved: WB (1 µg/mL)  Usage: Western Blot: Suggested dilution at 1 µg/mL in 5 % skim milk / PBS buffer, and HRP conjugated anti-Rabbit IgG should be diluted in 1: 50,000 - 100,000 as secondary antibody.
Comment:	Target Species of Antibody: Mouse
Restrictions:	For Research Use only

## Handling

---

Format:	Lyophilized
Reconstitution:	Distilled water
Concentration:	Lot specific
Buffer:	Lyophilized from PBS with 2 % sucrose
Handling Advice:	Avoid repeat freeze-thaw cycles.
Storage:	4 °C,-20 °C
Storage Comment:	Long term: -20°C, the use of 50% glycerol is recommended if storing aliquots in -20°C for long term use (up to 1 year)  Short term (less than 1 week): 4°C. Avoid freeze-thaw cycles.



**Image 1.**